

TuBAR[®]/Turbine[®] Retrofit for Wayne Vista 2 & 3



GAS THEFT & SKIMMING!

CAT Door

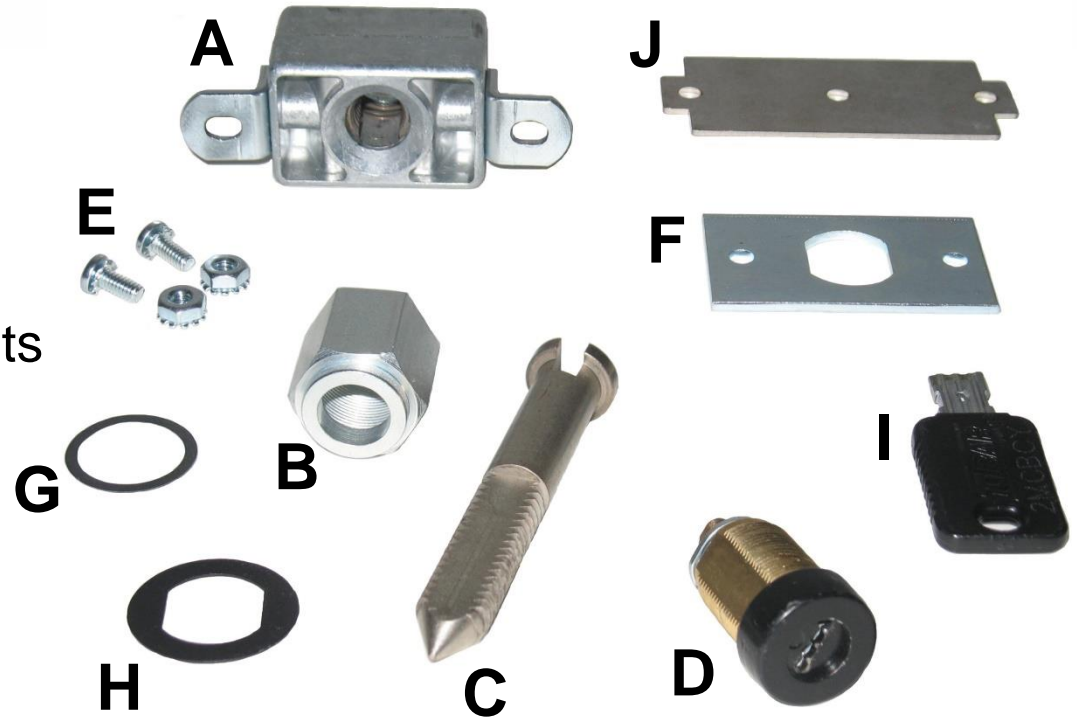
Retrofit: Vista 2 & 3

Part # DWC-V23



Parts Listing

- A. Quick Nut Assembly
- B. Steel Nut
- C. Steel Stud
- D. Lock Assembly (TuBAR® shown)
- E. Quick Nut Mounting Screws & Nuts
- F. Lock Mounting Plate
- G. Gasket
- H. Washer
- I. Key (Sold Separately)
- J. Drill Template (1 per order)



GAS THEFT & SKIMMING!

CAT Door

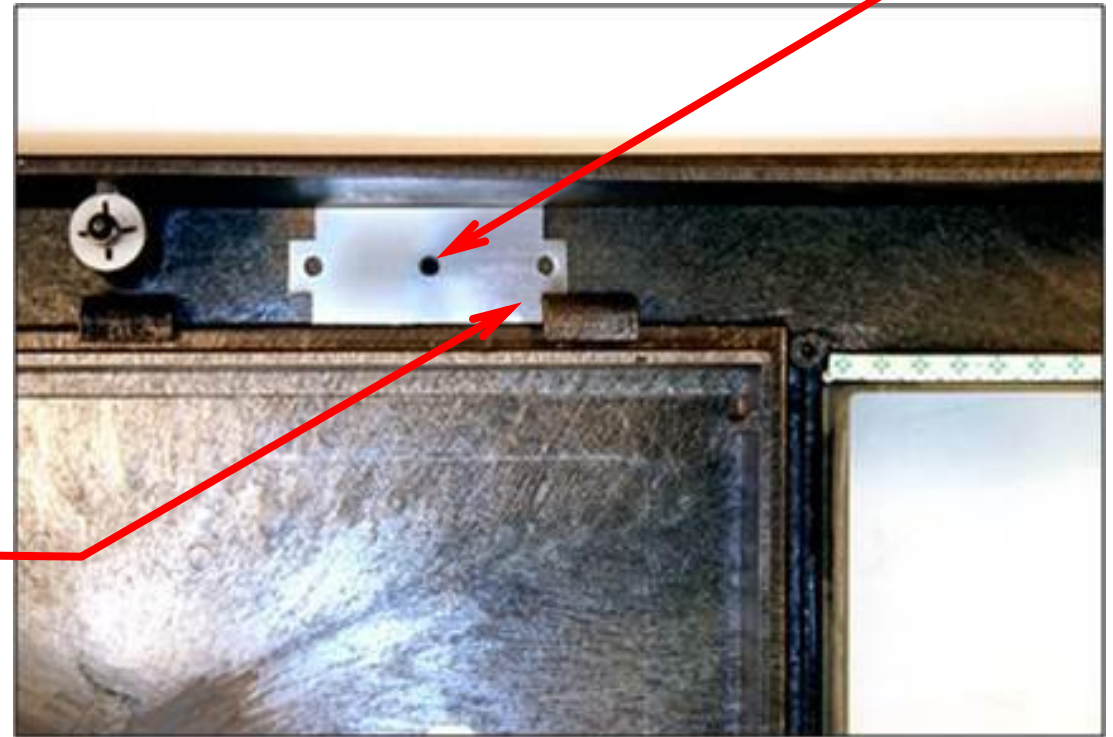
Retrofit: Vista 2 & 3

Part # DWC-V23

- 1) Using Drill Template (J), drill a $\text{Ø}3/16$ " center pilot hole in Panel in location shown.

Align Drill Template notch against this protrusion in panel.

 **Drill center hole only.**



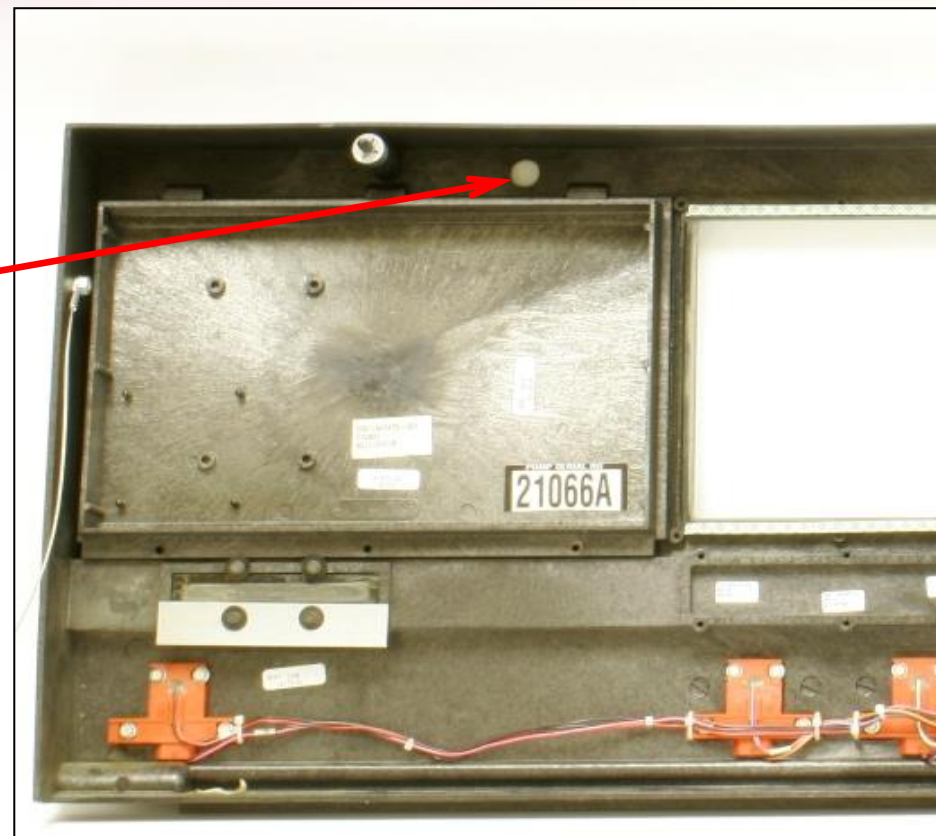
STOP GAS THEFT & SKIMMING!

CAT Door

Retrofit: Vista 2 & 3

Part # DWC-V23

- 2) Drill $\text{Ø}3/4$ " hole thru pilot hole of Step 1.



***Do Not drill hole
oversize.***



GAS THEFT & SKIMMING!

CAT Door

Retrofit: Vista 2 & 3

Part # DWC-V23

- 3) Close CAT door and insert the Steel Nut (B) into $\text{Ø}3/4$ " hole drilled in previous step.



CAT Door

Retrofit: Vista 2 & 3

Part # DWC-V23

Make sure to keep the marking tool as level as possible to ensure an accurate location on the header.

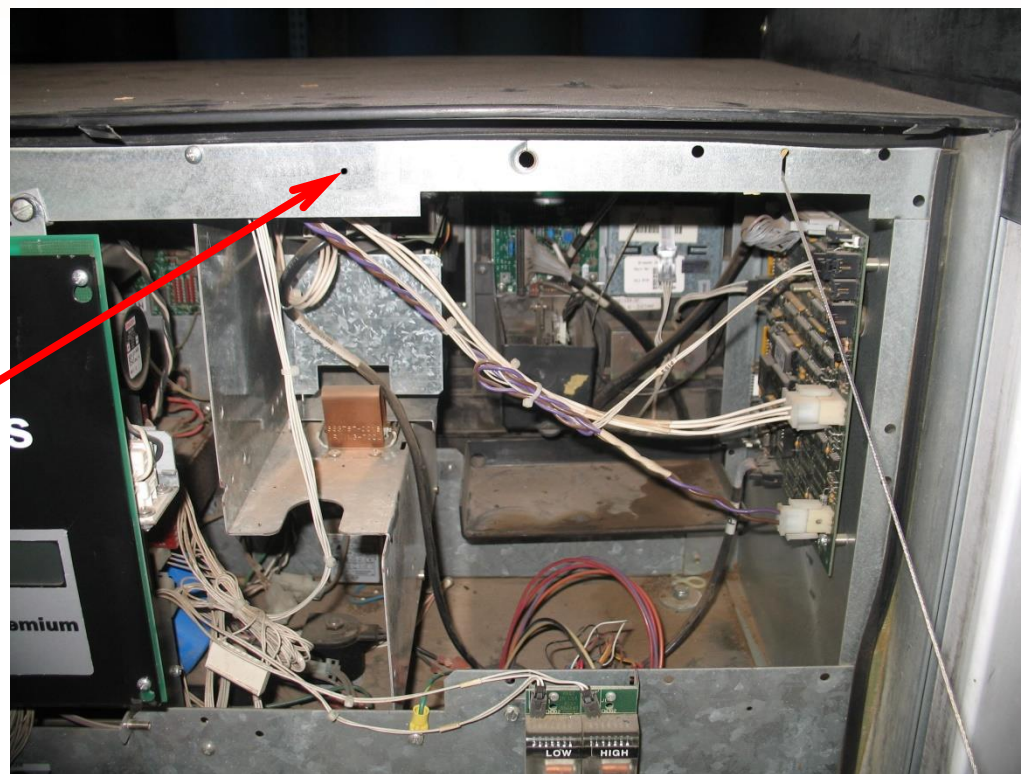
- 4) Insert a Sharpie or other marking tool through the Steel Nut (B) and mark the location of the Quick Nut Assembly (A) in the header frame.



STOP GAS THEFT & SKIMMING!

CAT Door Retrofit: Vista 2 & 3 Part # DWC-V23

- 5) Open CAT door to reveal the center mark on the header frame.



STOP GAS THEFT & SKIMMING!

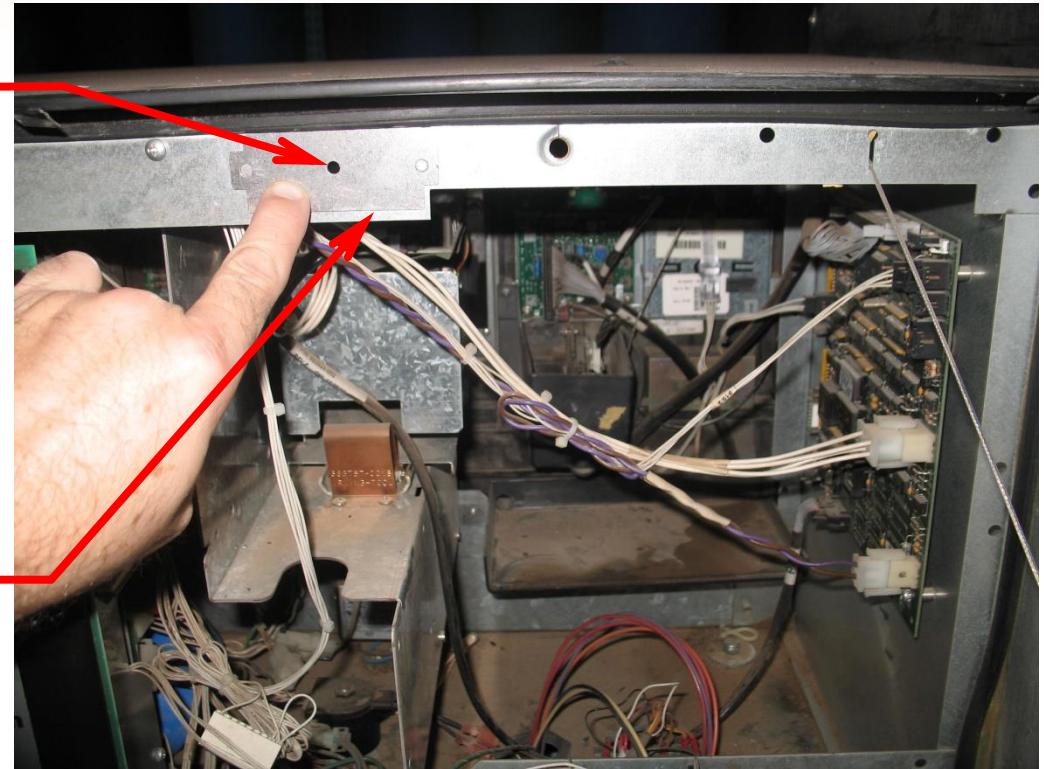
CAT Door

Retrofit: Vista 2 & 3

Part # DWC-V23

- 6) Place Drill Template (J) up against header frame with center hole over location mark from Step 5 and mark the other two end holes with a Sharpie or other marking tool.

Make sure that the Drill Template is parallel with the bottom of the header frame before marking the holes. Failure to do so could result in Quick Nut Assembly (A) and Steel Stud (C) mis-alignment causing possible inoperability of lock mechanism.



STOP GAS THEFT & SKIMMING!

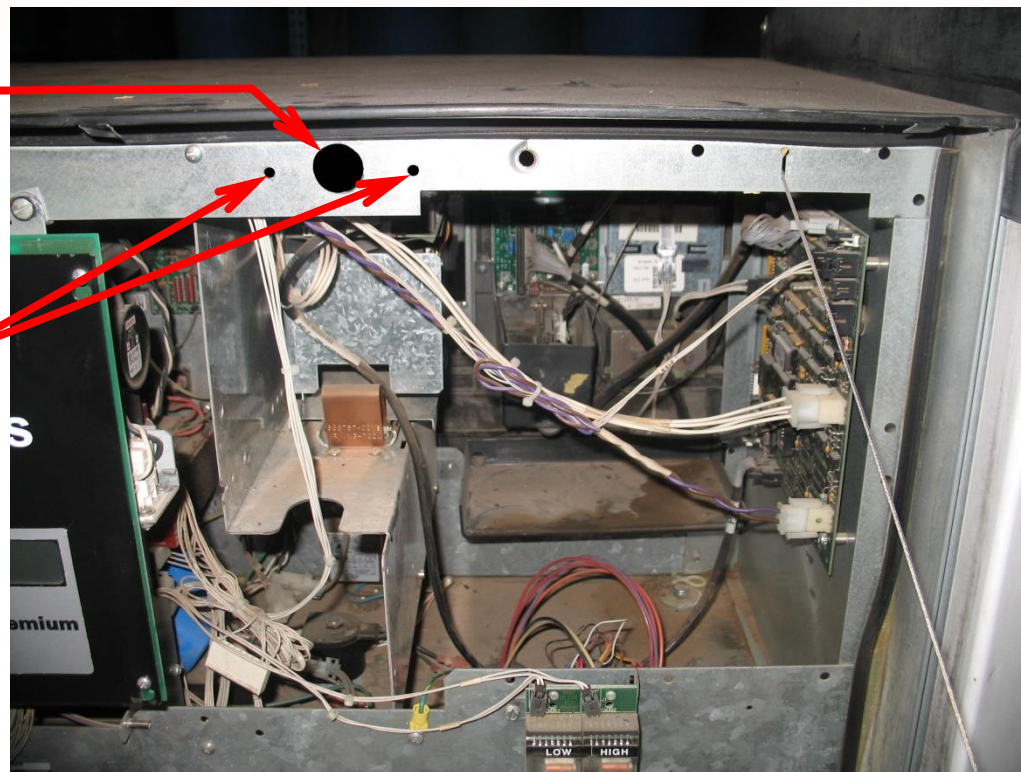
CAT Door Retrofit: Vista 2 & 3 Part # DWC-V23

7) Drill center hole at mark a minimum of $\text{Ø}7/8$ " to a maximum of $\text{Ø}1.0$ ".

8) Drill two end holes at marks $\text{Ø}3/16$ ".



When drilling into frame header, disconnect and relocate any wiring harnesses that may be an obstruction to drilling.



STOP

GAS THEFT & SKIMMING!

CAT Door

Retrofit: Vista 2 & 3

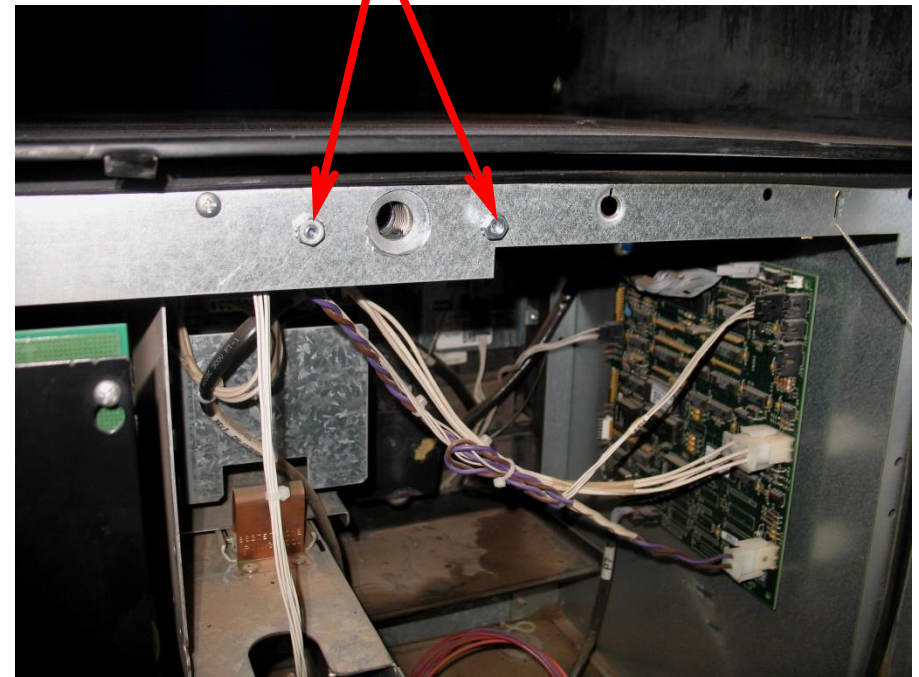
Part # DWC-V23

- 9) For easiest installation, install two screws (E) into Quick Nut Assembly brackets as shown below.



Bracket holes are slotted for minor side to side adjustment.

- 10) Install Quick Nut Assembly to back side of frame header and assemble two Hex Nuts (E) to Screws and tighten. Reconnect any harnesses that were disconnected in previous step.



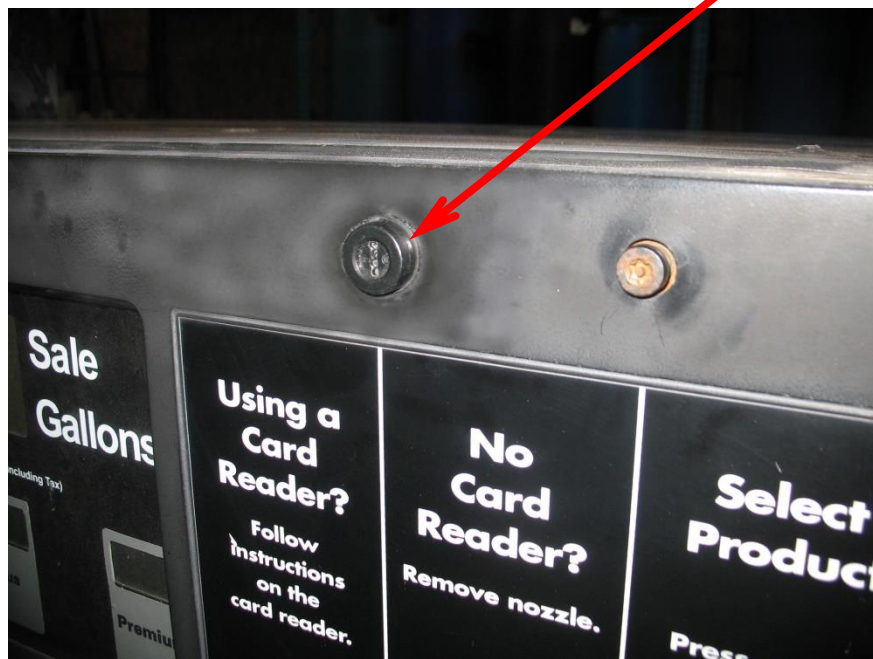
STOP GAS THEFT & SKIMMING!

CAT Door

Retrofit: Vista 2 & 3

Part # DWC-V23

11) Install Lock Assembly (D) thru Gasket (G) and into Ø3/4" hole in panel door.



For TuBAR, locks are to be installed with the key ridges upward as shown.



For Turbine, locks are to be installed with the orientation indicator up as shown.



STOP GAS THEFT & SKIMMING!

CAT Door

Retrofit: Vista 2 & 3

Part # DWC-V23



12) Install Mounting Plate (F), Steel Stud(C) and Steel Nut (B). Tighten Nut securely. Steel Stud should have slight “wobble” after nut is securely tightened.

The installation is now complete. With the key removed from the Lock Assembly, simply close the door and the Steel Stud should ratchet into the Quick Nut Assembly. Tighten security screws.



STOP GAS THEFT & SKIMMING!

CAT Door

Retrofit: Vista 2 & 3

Part # DWC-V23



OPERATING INSTRUCTIONS:

To Open: Insert key (I) into Lock Assembly (D). Turn key 90° clockwise to unlock. Unscrew security screws left and right until door is free to open. Once door is open, turn key CCW back to locked position and remove key.

To close: In the locked position with key removed, simply close door and the Steel Stud (C) will ratchet into the Quick Nut Assembly (A). Tighten security screws left and right until door is sealed.



When opening door, always unlock the Lock Assembly first. Never unscrew security screws before unlocking the Lock Assembly. Doing so could result in damaged door, pump frame, lock assembly or broken keys. CompX Security Products is not responsible for damage that has occurred as a result of incorrect operation.



GAS THEFT & SKIMMING!