

TuBAR[®]/Turbine Retrofit for Wayne Ovation 2



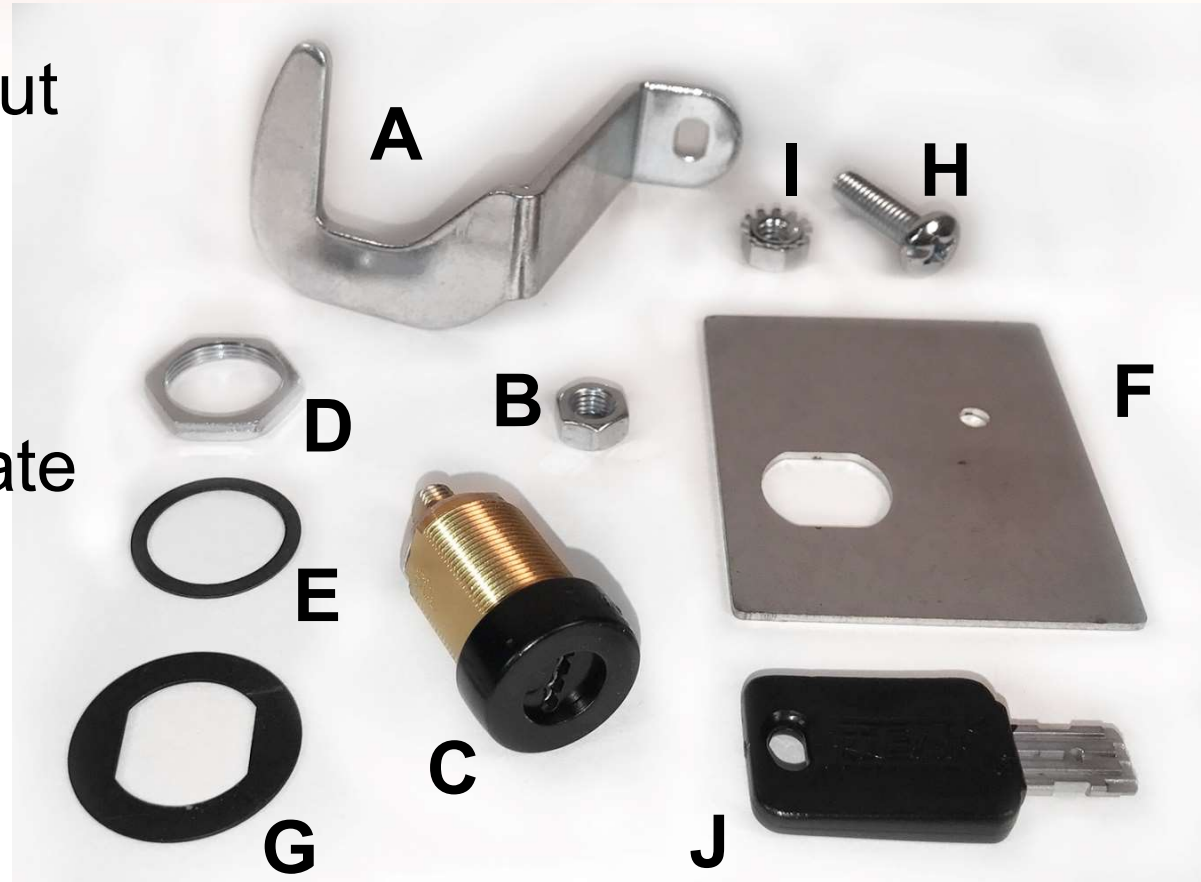
GAS THEFT & SKIMMING!

TuBAR®/Turbine

Retrofit:Ovation 2 CAT Door

Part # DWC-02

- A. Ovation ARC Cam
- B. Thread Locking Cam Nut
- C. Lock Assy (TuBAR Shown)
- D. Cylinder Nut
- E. Gasket
- F. Drill & Mounting Template
- G. Flat Washer
- H. Screw #1/4-20 x 1"
- I. Hex Keps Nut #1/4-20
- J. Key (Sold Separately)



STOP

GAS THEFT & SKIMMING!

TuBAR®/Turbine Retrofit: Ovation 2 CAT Door Part # DWC-02

Inside door edge.

STEP 1

Place Drill Template (F) along inside edge of door panel as shown in (Fig 1) and drill a $\text{Ø}3/16$ " pilot hole.

Drill pilot hole here.

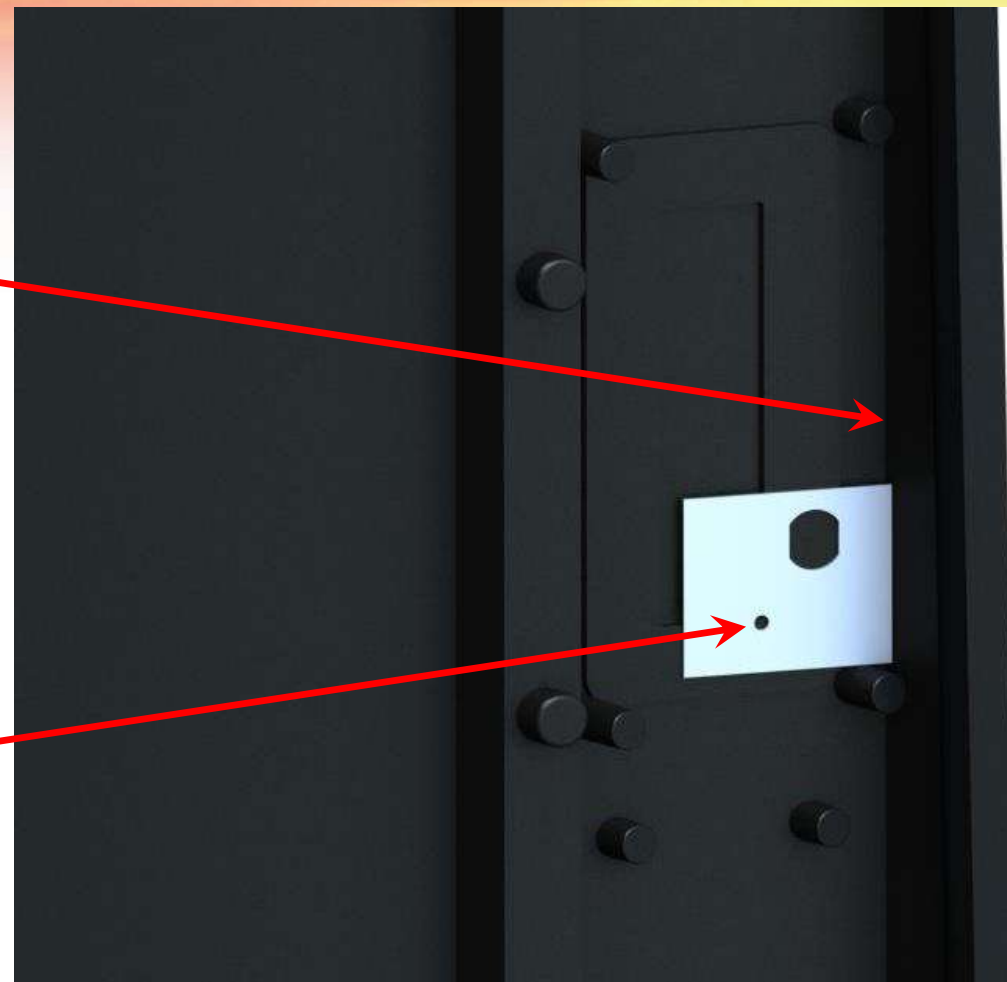


Figure 1

 Lock location may interfere with interior equipment found on some Ovation 2 doors. Adjust lock position accordingly.

STOP GAS THEFT & SKIMMING!

TuBAR®/Turbine Retrofit: Ovation 2 CAT Door Part # DWC-02

STEP 2

Drill $\text{Ø}3/4$ " hole through pilot hole starting from outside of the door as shown in (Fig 2).

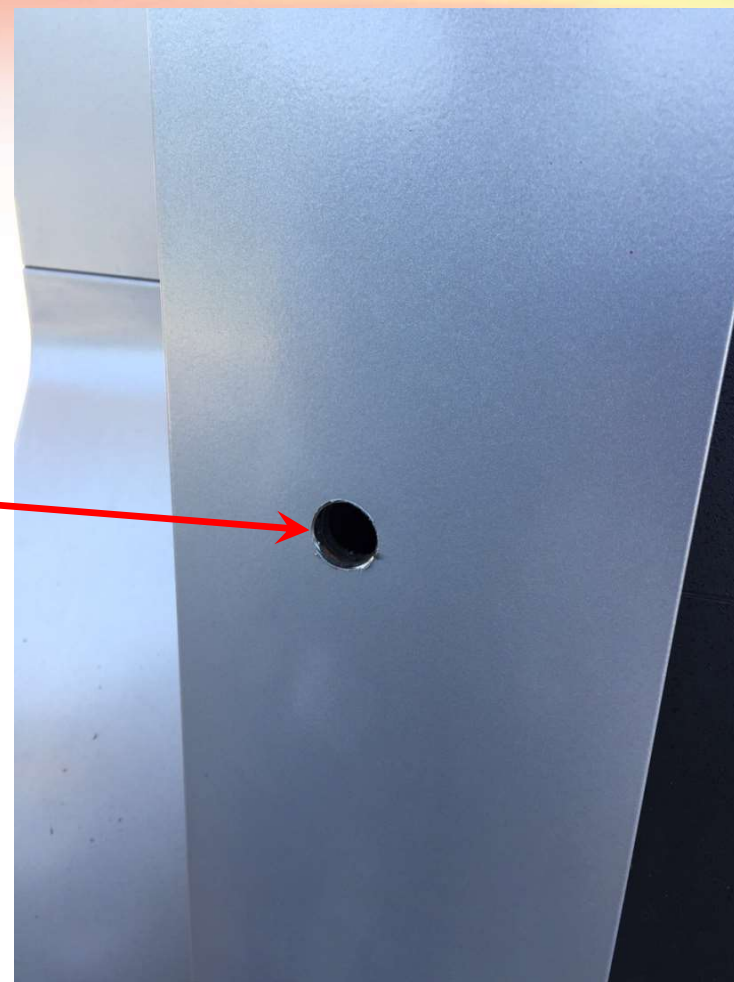


Figure 2

STOP

GAS THEFT & SKIMMING!

TuBAR®/Turbine Retrofit: Ovation 2 CAT Door Part # DWC-02

STEP 3

Assemble Washer (G) and Gasket (E) onto Lock Assembly (C) and install into $\text{Ø}3/4$ " hole in door (Fig 3).



Figure 3

STOP

GAS THEFT & SKIMMING!

TuBAR®/Turbine

Retrofit: Ovation 2 CAT Door

Part # DWC-02

STEP 4

Assemble Mounting Plate (F), Lock Washer and secure with Cylinder Nut (D) (Fig 4).

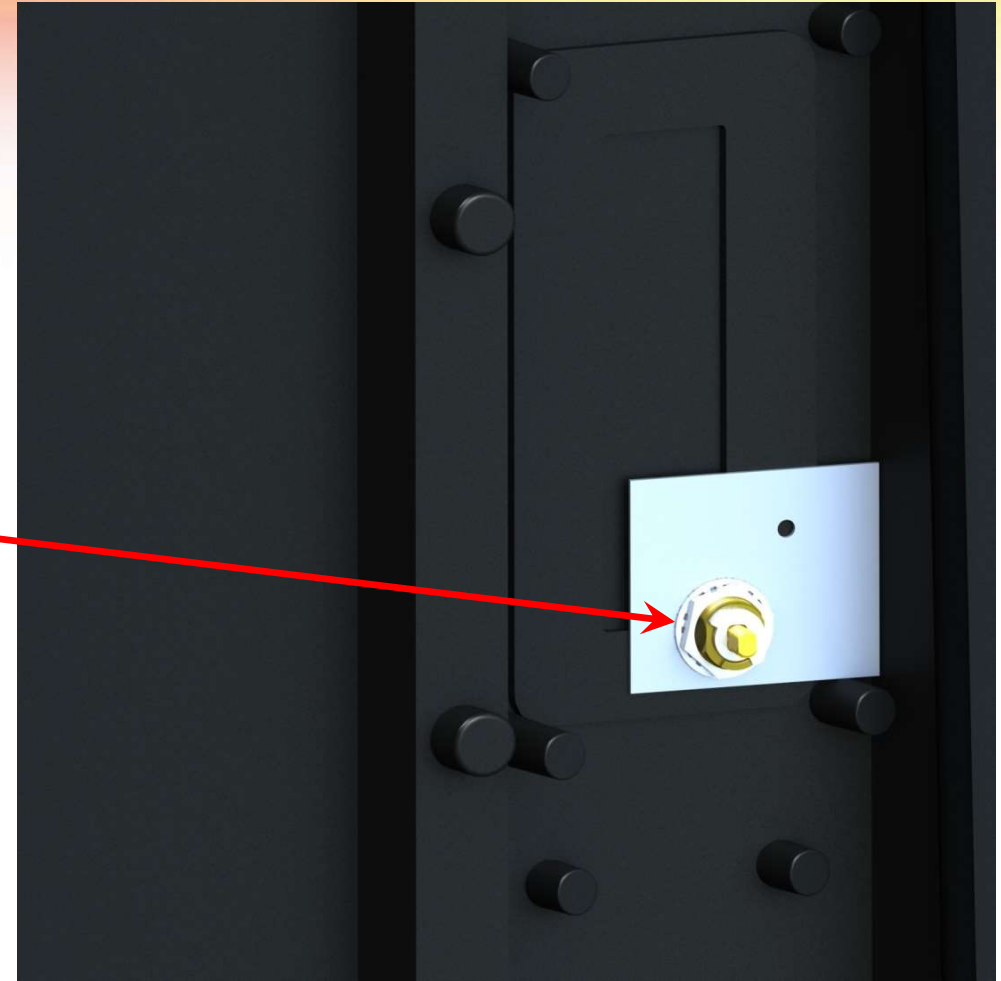


Figure 4



GAS THEFT & SKIMMING!

TuBAR®/Turbine Retrofit: Ovation 2 CAT Door Part # DWC-02

STEP 5

Install Cam (A) to Lock Assembly (C) and secure with Thread Locking Cam Nut (B) (Fig 5).



Thread Locking Cam Nut requires additional force to install.

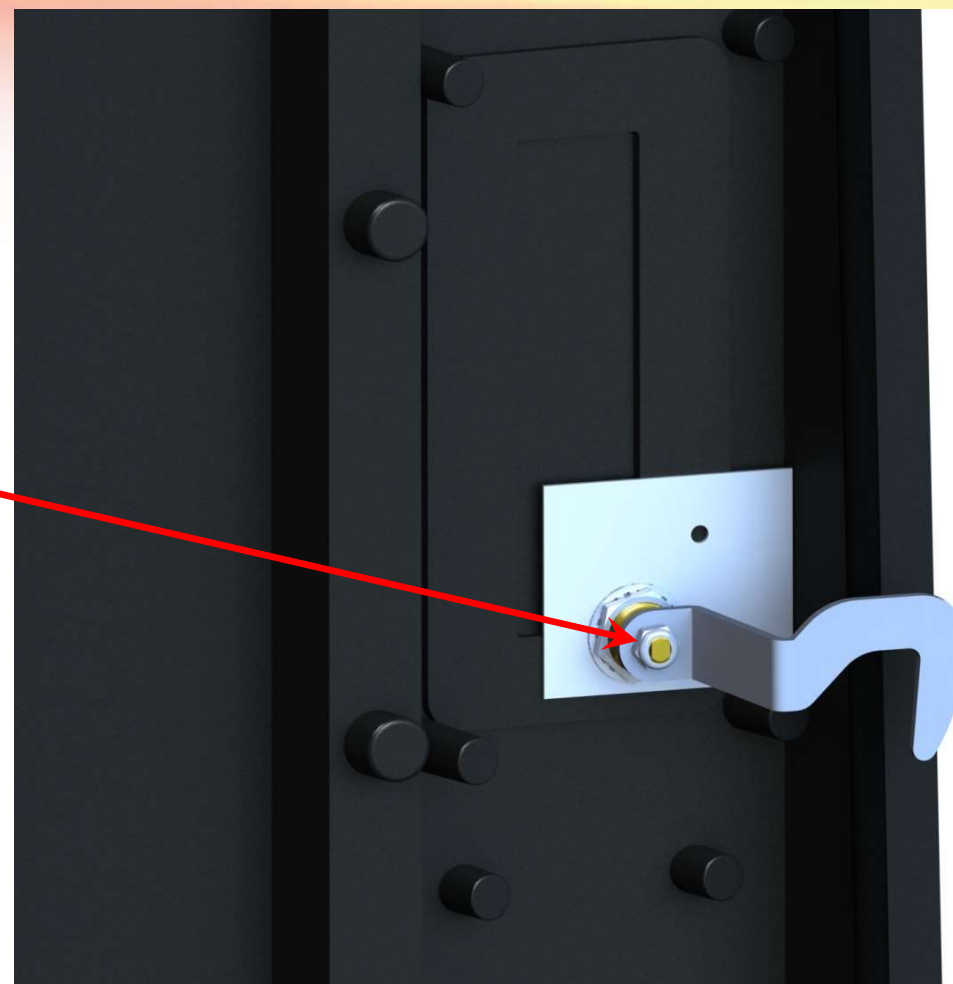


Figure 5

STOP

GAS THEFT & SKIMMING!

TuBAR®/Turbine Retrofit: Ovation 2 CAT Door

Part # DWC-02

Drill $\text{Ø}3/16$ " hole in frame in approximate location shown. Insert Screw (H) into hole and secure with Hex Nut (I) from inside frame.



Figure 7

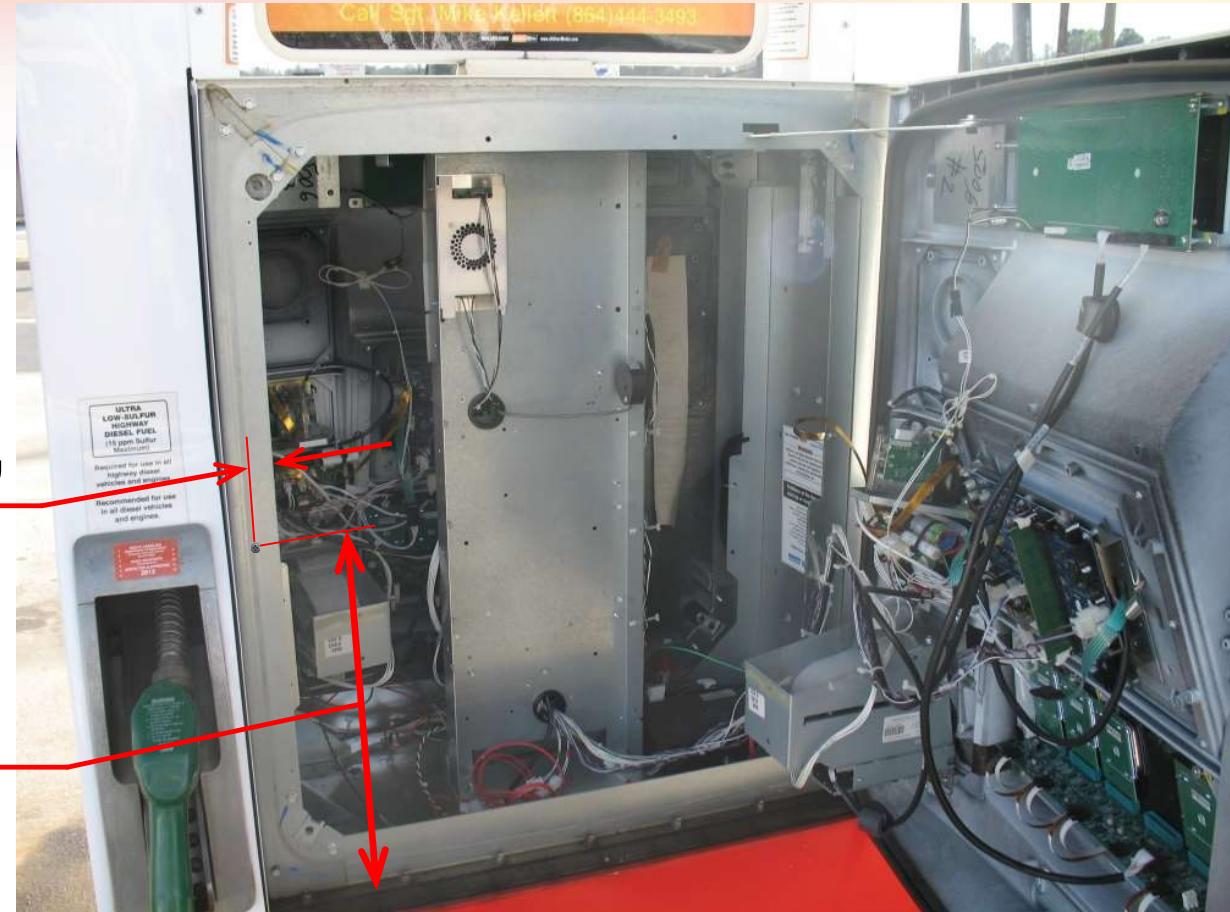


Figure 6

STOP GAS THEFT & SKIMMING!

CAT Door Retrofit Upgrade: Ovation Security Box kit Part # DWC-02-SB



Kit includes:

- (1) Security Box
- (2) $\frac{1}{4}$ -20 x 1" Screws
- (2) $\frac{1}{4}$ -20 Hex Keps Nuts
- (1) Thread Locking Cam Nut



STOP

GAS THEFT & SKIMMING!

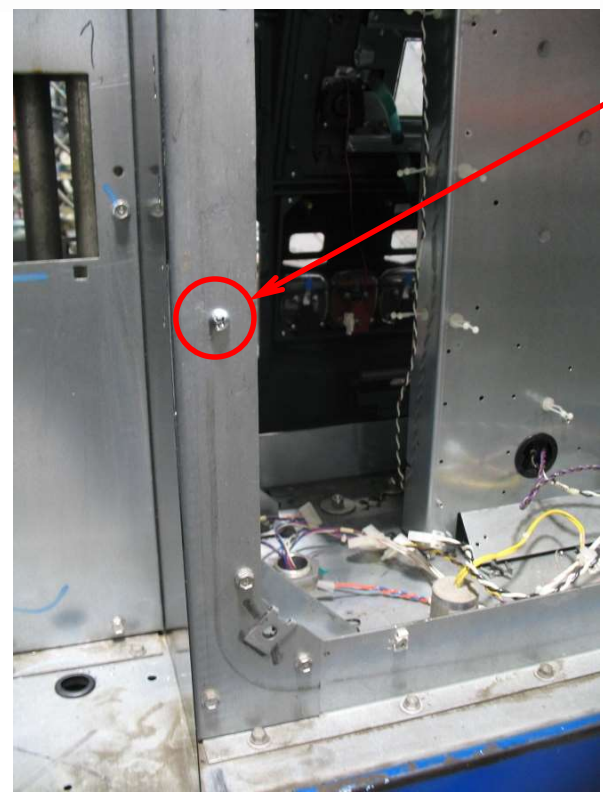
CAT Door Retrofit Upgrade: Ovation Security Box kit



Part # DWC-O2-SB

Remove existing #10-24 nut and screw from previous installation.

Drill existing hole to $\text{Ø}1/4"$. Measure UP approximately $2-3/8"$ and drill another $\text{Ø}1/4"$ hole.



Existing #10-24 screw



2-3/8

Existing hole from previous installation.



STOP GAS THEFT & SKIMMING!

CAT Door Retrofit Upgrade: Ovation Security Box kit



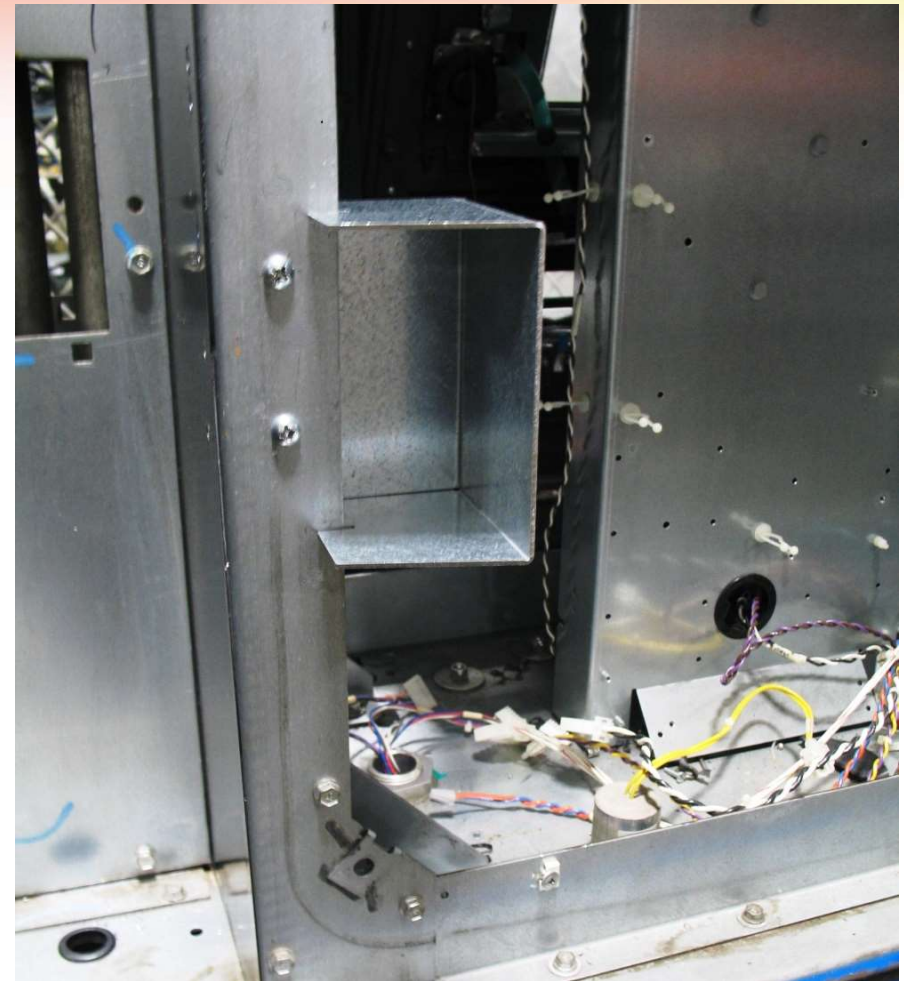
Part # DWC-02-SB

Slide Security Box over frame and install (2) 1/4-20 screws and secure with (2) 1/4-20 nuts.

Remove the existing nyloc Cam Nut from Lock Assembly and replace with new Thread Locking Cam Nut supplied.

Thread Locking Cam Nut requires additional force to install.

Cam on Lock Assembly will engage around lower screw.



GAS THEFT & SKIMMING!