

TuBAR[®]/Turbine Retrofit for Wayne Ovation



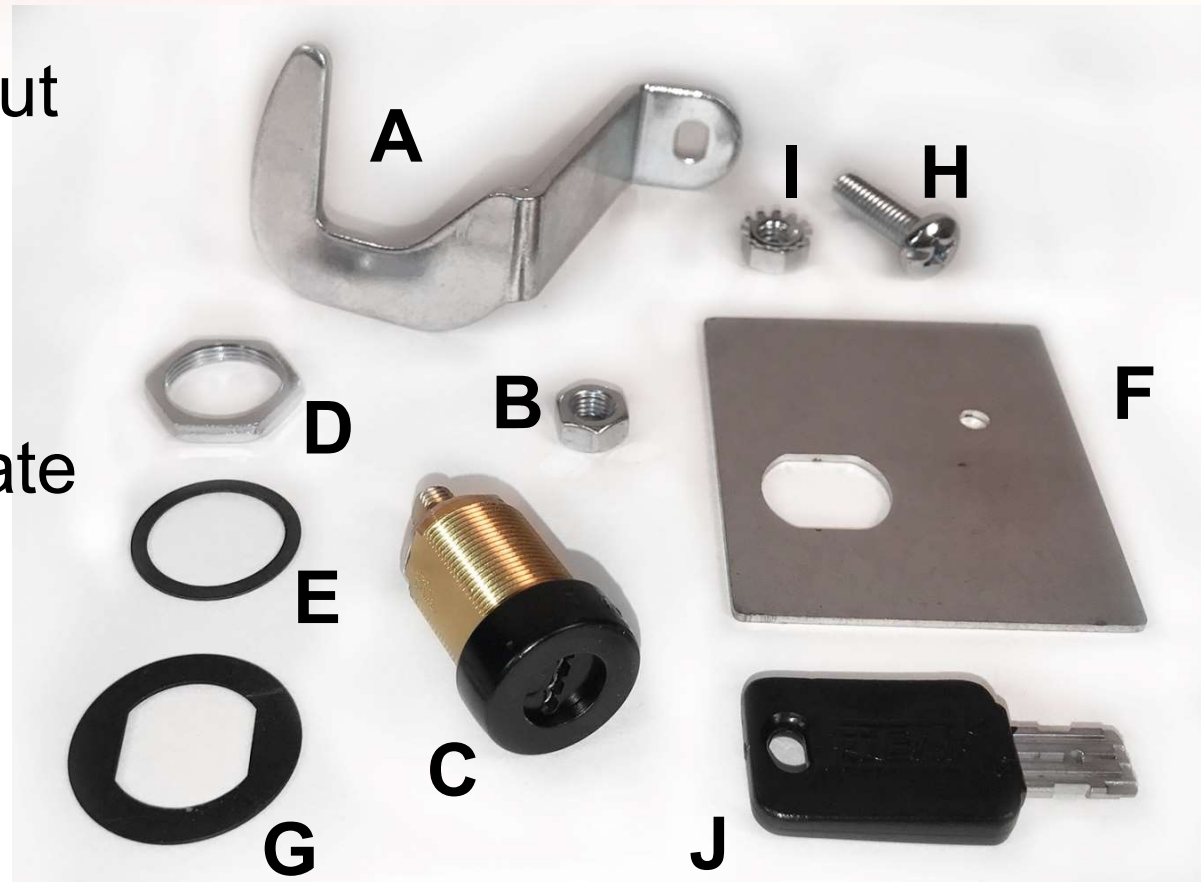
GAS THEFT & SKIMMING!

TuBAR®/Turbine

Retrofit: Ovation CAT Door

Part # DWC-O

- A. Ovation ARC Cam
- B. Thread Locking Cam Nut
- C. Lock Assy (TuBAR Shown)
- D. Cylinder Nut
- E. Gasket
- F. Drill & Mounting Template
- G. Flat Washer
- H. Screw #1/4-20 x 1"
- I. Hex Keps Nut #1/4-20
- J. Key (Sold Separately)



STOP

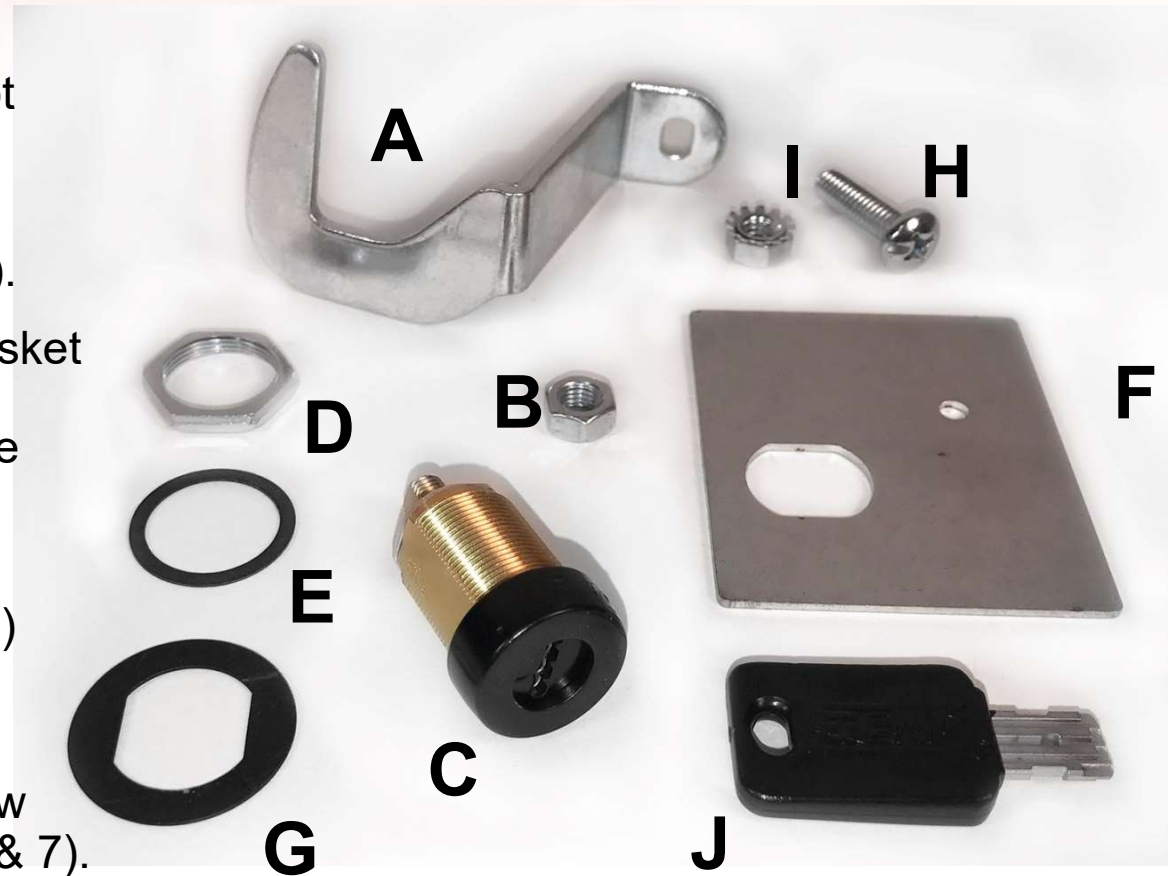
GAS THEFT & SKIMMING!

TuBAR®/Turbine

Retrofit: Ovation CAT Door

Part # DWC-O

1. Use Drill Template (F) to drill $\text{Ø}3/16$ " pilot hole in Panel by placing template along inside edge at desired height (Fig 1).
2. Drill $\text{Ø}3/4$ " hole through pilot hole (Fig 2).
3. Install Lock (C) through Washer (G), Gasket (E) and $\text{Ø}3/4$ " Panel hole (Figs 2 & 3). Assemble Mounting Plate (F) and secure with Cylinder Nut (D) (Fig 4).
4. Install Cam (A) to Lock Assembly and secure with Thread Locking Cam Nut (B) (Fig 5). (Nut requires additional force to install)
5. Drill $\text{Ø}1/4$ " hole in frame and insert Screw (H) and Secure with Hex Nut (I) (Figs 6 & 7).



STOP

GAS THEFT & SKIMMING!

TuBAR®/Turbine Retrofit: Ovation CAT Door Part # DWC-O

Place template along
inside edge as shown
and drill $\text{Ø}3/16$ " pilot
hole.

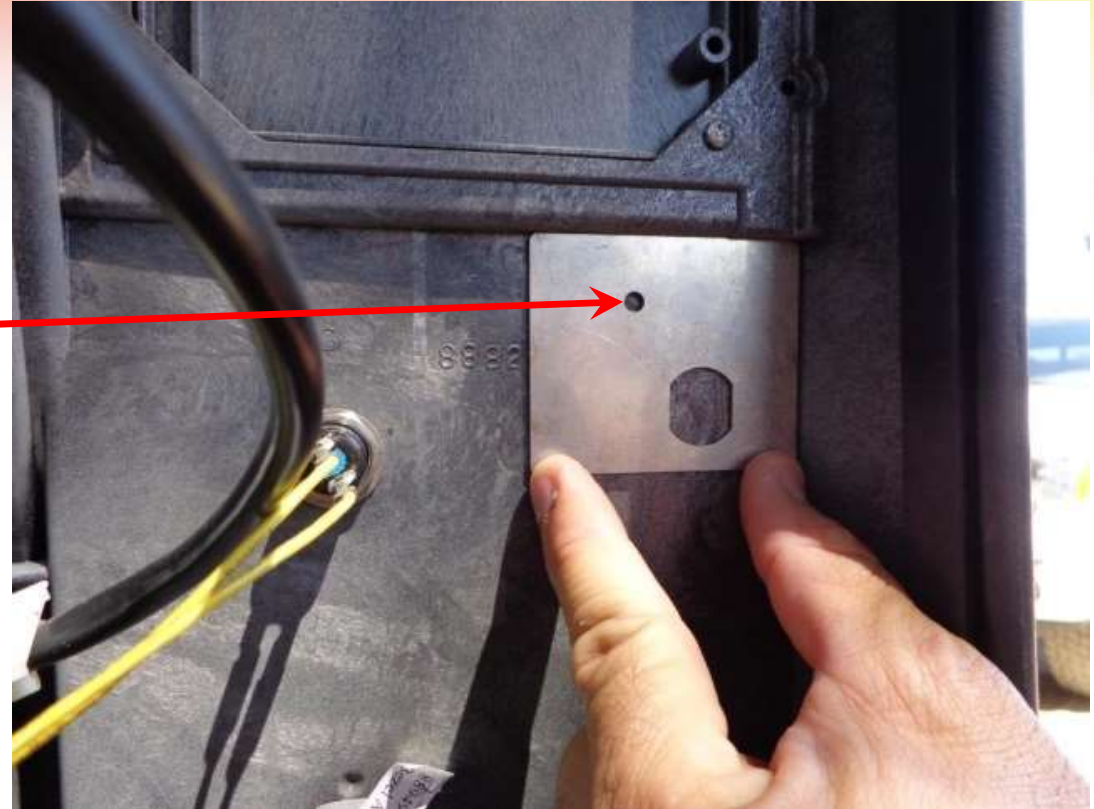


Figure 1

 Lock location may interfere with a “call
button” decal found on some Ovation
doors, adjust lock position accordingly.

STOP GAS THEFT & SKIMMING!

TuBAR®/Turbine Retrofit: Ovation CAT Door Part # DWC-O



Drill $\text{\O}3/4$ " hole through
pilot hole.

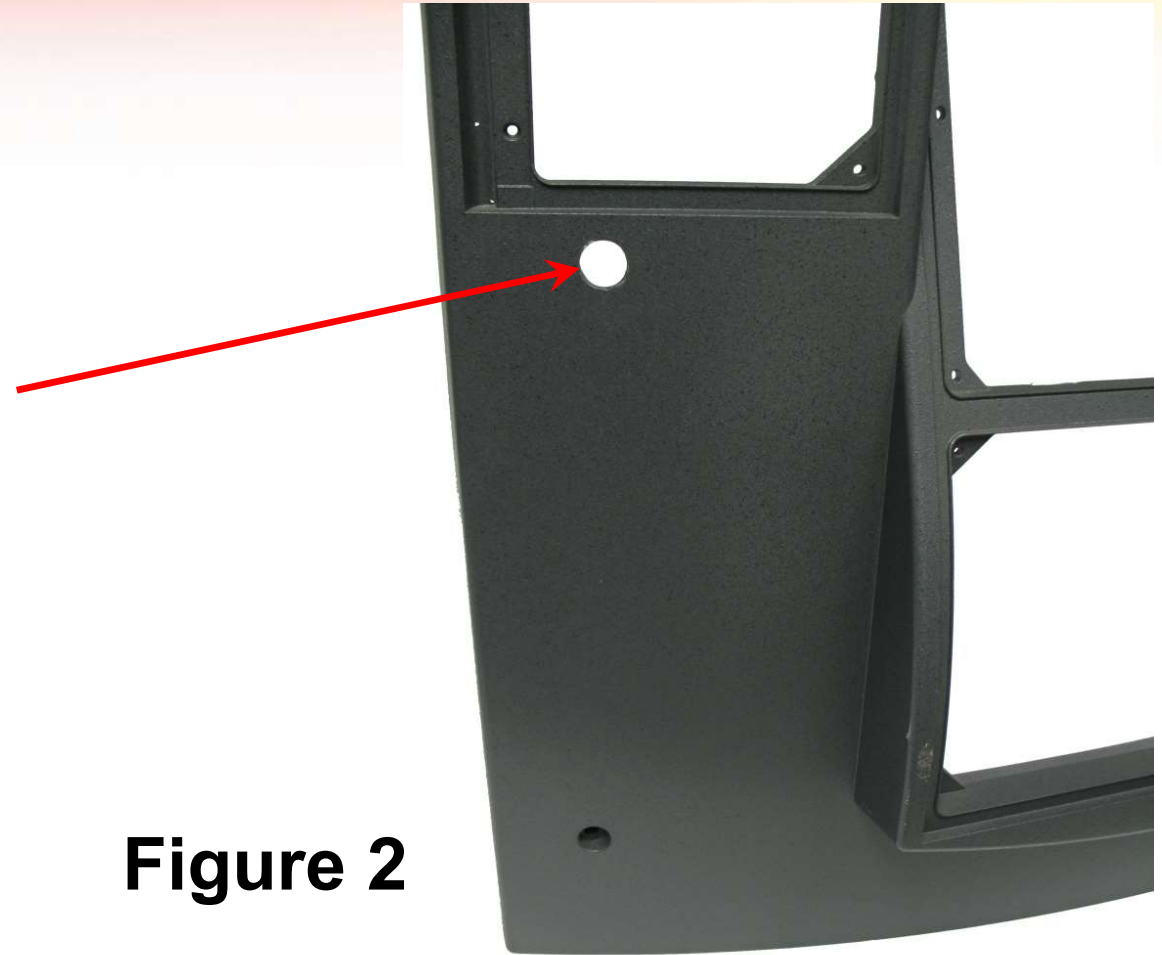


Figure 2



GAS THEFT & SKIMMING!

TuBAR®/Turbine

Retrofit: Ovation CAT Door

Part # DWC-O



Install Lock Assembly (C)
thru Washer (G), Gasket (E)
and Ø3/4" Panel hole.



Figure 3



GAS THEFT & SKIMMING!

TuBAR®/Turbine Retrofit: Ovation CAT Door Part # DWC-O

Assemble Mounting
Plate (F) and secure with
Cylinder Nut (D).



Figure 4



GAS THEFT & SKIMMING!

TuBAR®/Turbine Retrofit: Ovation CAT Door Part # DWC-O

Assemble Cam (A) to
Lock Assembly (C) and
secure with Thread
Locking Cam Nut (B).



Thread Locking Cam Nut requires
additional force to install.



Figure 5

STOP

GAS THEFT & SKIMMING!

TuBAR®/Turbine Retrofit: Ovation CAT Door Part # DWC-O

Drill $\text{\O}1/4$ " hole in frame in approximate location shown. Insert Screw (H) into hole and secure with Hex Nut (I) from inside frame.

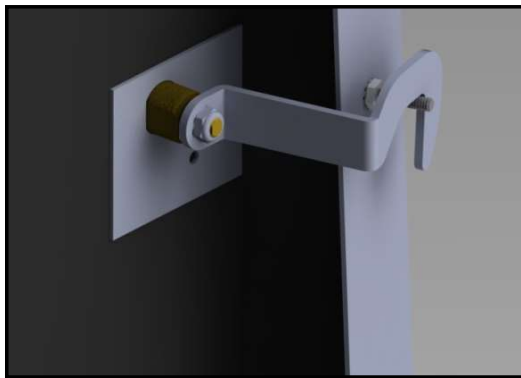


Figure 7



Figure 6

STOP GAS THEFT & SKIMMING!

CAT Door Retrofit Upgrade:



Ovation Security Box kit

Part # DWC-O-SB

Kit includes:

- (1) Security Box
- (2) $\frac{1}{4}$ -20 x 1" Screws
- (2) $\frac{1}{4}$ -20 Hex Keps Nuts
- (1) Thread Locking Cam Nut



STOP GAS THEFT & SKIMMING!

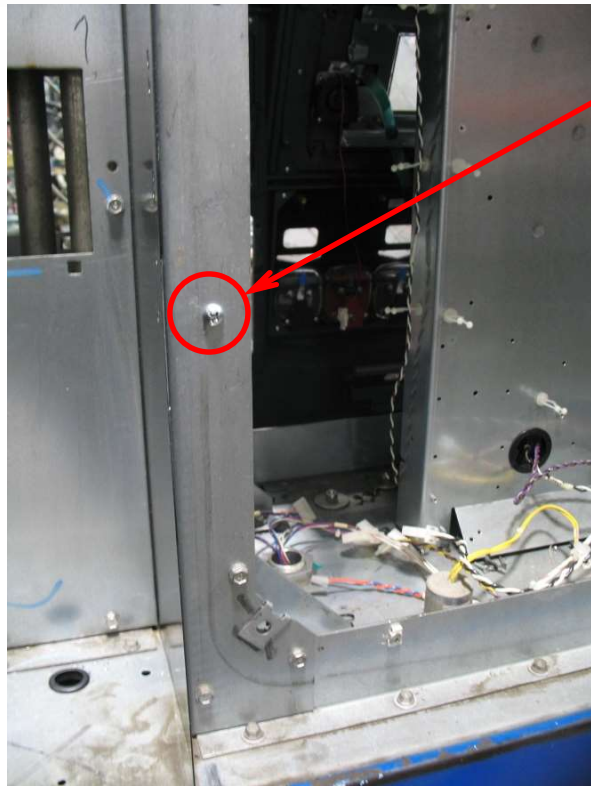
CAT Door Retrofit Upgrade: **CompX** Ovation Security Box kit



Part # DWC-O-SB

Remove existing #10-24 nut and screw from previous installation.

Drill existing hole to $\text{Ø}1/4"$. Measure UP approximately $2-3/8"$ and drill another $\text{Ø}1/4"$ hole.



Existing #10-24 screw



2-3/8

Existing hole from previous installation.



STOP GAS THEFT & SKIMMING!

CAT Door Retrofit Upgrade:

Ovation Security Box kit

Part # DWC-O-SB

Slide Security Box over frame and install (2) 1/4-20 screws and secure with (2) 1/4-20 nuts.

Remove the existing nyloc Cam Nut from Lock Assembly and replace with new Thread Locking Cam Nut supplied.

Thread Locking Cam Nut requires additional force to install.

Cam on Lock Assembly will engage around lower screw.



STOP

GAS THEFT & SKIMMING!