

CompX **Regulator**

Instruction Manual



CompX® **RegulatoR**®

Thank you for purchasing the CompX® RegulatoR®. The RegulatoR is an innovative solution for locking cabinet doors and drawers. It can mount to cabinet doors or drawers with a material thickness of 1/32” to 1-7/16”.

Powered by 2-AAA batteries (included), RegulatoR operates using a 4 to 8 digit code. Operation is simple: type a valid code and press ENTER. Then just turn the lever to the locked or unlocked position.

RegulatoR is easy to install, and offers:

- Programmable user and supervisor codes
- Programmable modes of operation
- Programmable reset features

RegulatoR is intended for interior use only.

Operating Temperature: 50°F – 120°F (10°C – 48°C)

Note: It is strongly recommended that batteries be replaced on an annual basis. In the event the batteries should die, they can be replaced via the external battery compartment. Please use high quality alkaline batteries for longest battery life.

To locate serial number of your CompX RegulatoR- Serial number is located on the included green decal. In addition, the long edge of the Regulator may have the serial number laser etched into it.



CompX *Regulator*

Table of Contents

Included Packaged Components.....4

Powering Up and Battery Installation5

Programming Introduction6

Programming Mode8

Changing the User Code9

Changing the Supervisor Code10

Single Use/Standard Mode11

Single Use Timeout ON/OFF12

Security Timeout ON/OFF13

Reset User Code14

Technician Mode15

User Slot (03-20) Programming17

Part Number Descriptions.....21

SlamCam wedge strikes22

Adapters and Spacers.....23

Mounting Template.....24

CompX® **RegulatoR**®

Packaged Components

CompX® RegulatoR® is offered in two versions: Manual Lock and Self Lock. Packaged kit contents will vary depending on the version. Both have the required AAA alkaline batteries preinstalled.

Manual Lock Version Contents:

Manual RegulatoR Lock Assembly

Hardware kit, which includes:

One Offset locking cam / One Straight locking cam

FlexaCam adapters (three sizes)

One fastener with washer for the cam retention

Three different fasteners for housing mounting

Double D cylinder washer and cylinder nut

Self Lock Version Contents:

Self Locking RegulatoR Lock assembly featuring SlamCAM

Hardware kit, which includes:

Slam Cam Bolt assy

Three fastener with washers for the cam retention

One fastener for attaching housing to surface

Double D cylinder washer and cylinder nut

SlamCam spacer discs (Four differnt thicknesses)

Two Wedged Strikes (one 1/2" and one 5/8" thick unit)

Two wood screws for fastening strikes to cabinet

Each lock contains Two green stickers which have information printed on them needed for resetting RegulatoR lock. In the event RegulatoR needs to be reset, *one* green sticker is placed on the back of the device. The remaining green sticker should be saved in a safe and secure location for future reference. (See page 11 for reset instructions.)

Care and Cleaning

To clean the RegulatoR surface, apply non-acid based cleaner to a clean cotton cloth; do not spray cleaner directly on the RegulatoR. Wipe down keypad and its respective housing surfaces of excess cleaner.

CompX® *RegulatoR*®

Powering Up and Battery Installation

CompX® RegulatoR® is shipped with two AAA batteries. While RegulatoR features a low battery indicator, annual battery replacement is recommended. Mixing batteries of different chemistries could damage the RegulatoR resulting in lock failure.

To power up RegulatoR, remove the red tag. Lock is now ready for use.

A T-15 pin in head Torx® (6-lobe) will be required to remove the battery cover. (Not Included)

To change batteries:

1. Loosen the retaining screw.
2. Remove battery cover.
3. Press **CLEAR** 5 times.
4. Insert new batteries as shown in the illustration.
5. Reinstall battery cover, tighten retaining screw by hand tool. **Do not use a powered tool to tighten.**



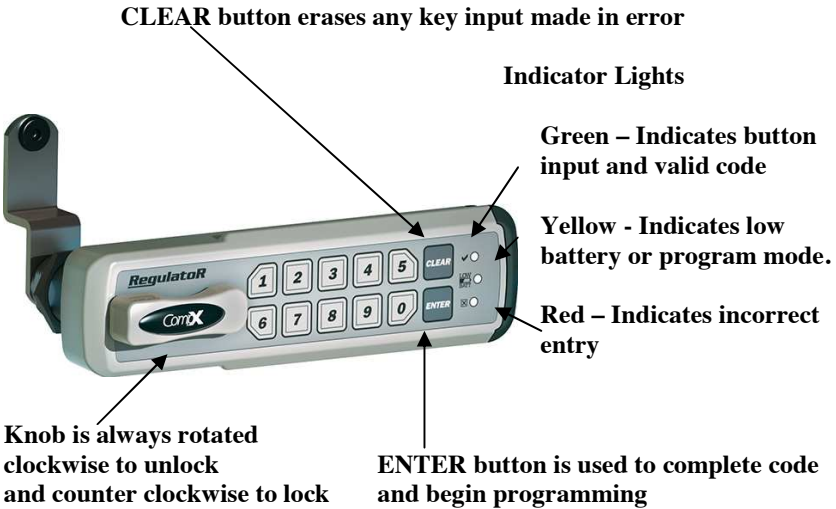
CompX® **RegulatoR**®

Programming – Introduction

CompX® RegulatoR® is easy to program and operate. Type the user code (factory default **1234**) and press **ENTER** to lock or unlock the cabinet.

The supervisor can change operating codes, modes and restore lock settings. While RegulatoR is easy to program, we highly recommend reading the complete programming instructions prior to making any changes. Remember to keep track of any programming changes.

Button locations, indicator lights and knob referenced in the programming instructions are shown below.



CompX® **RegulatoR**®

CompX® RegulatoR® is offered with Self Lock featuring SlamCAM. If your lock is the Self Lock version, follow the directions below to unlock and lock the RegulatoR:



To operate the standard Self Lock version of RegulatoR:

Type a valid code, press ENTER and rotate knob clockwise 90°, hold knob until door or drawer is open. Release knob, RegulatoR knob will return to the locked position. Door or drawer can be closed at any time.

CompX® RegulatoR® is offered in a Manual Lock version. If your lock is the Manual Lock version follow the directions below to unlock and lock the RegulatoR.



To operate the standard Manual Lock version of RegulatoR:

To unlock, type a valid code, press ENTER and rotate knob clockwise 90°. To lock, rotate knob 90° counter clockwise.

CompX **RegulatoR**

RegulatoR Programming Mode

To enter programming mode you must know the supervisor code. The default supervisor code is **12345**. Once in programming mode, multiple changes can be made prior to exiting programming.

There is a **10** second programming time limit between each step. If RegulatoR times out or an error is made, programming will end and you will need to enter programming mode again.

1. Lock must be in the **locked** position prior to entering programming mode.
2. Type supervisor code and press **ENTER**.
Rotate the knob to the **unlocked** position and press and hold **ENTER** for **3** seconds (**yellow** indicator light will illuminate).
 - If product is Self Lock with the SlamCAM feature you can now let go of the knob.
3. With the **yellow** indicator light illuminated, programming can begin.

CompX **RegulatoR**

Changing the User Code

To change the user code, follow the steps on page 9 to enter programming mode.

The factory default user code is **1234** (User codes must be 4 to 8 digits in length.)

There is a **10** second programming time limit between each step. If RegulatoR times out or an error is made, programming will end and you will need to enter programming mode again.

1. Place RegulatoR into programming mode (see page 9).
2. Press **1** and then press **ENTER**.
3. Type the current user code and press **ENTER**.
4. Type the new user code and press **ENTER**.
5. Retype the new user code and press **ENTER**.
6. If successful, the **green** indicator light will illuminate for 1 second.

Continue programming or press **9** and then **ENTER** to exit programming.

CompX® **RegulatoR**®

Changing the Supervisor Code

To change the supervisor code, follow the steps on page 9 to enter programming mode.

The factory default supervisor code is **12345** (supervisor codes must be 4 to 8 digits in length.)

There is a **10** second programming time limit between each step. If RegulatoR times out or an error is made, programming will end and you will need to enter programming mode again.

1. Place RegulatoR into programming mode (see page 9).
2. Press **2** and then press **ENTER**.
3. Type the current supervisor code and press **ENTER**.
4. Type the new supervisor code and press **ENTER**.
5. Retype the new supervisor code and press **ENTER**.
6. If successful, the **green** indicator light will illuminate for 1 second.

Continue programming or press **9** and then **ENTER** to exit programming.

RegulatoR® features a reset code which will restore the default supervisor code and user code. RegulatoR was shipped with reset stickers; one attached to the back of the RegulatoR and an extra sticker that should be saved in a safe and secure location for future reference.

*To restore the factory default supervisor and user code, type the Reset Code assigned to the RegulatoR and press **ENTER**.*

CompX® RegulatoR® features several modes of operation. These functions can be changed using the following instructions with a valid supervisor code.

CompX **RegulatoR**

Programming Single Use Mode / Standard Mode

Single Use Mode allows for a revolving user code so multiple people may use the lock without having to reprogram the RegulatoR each time.

Note: This mode **cannot** be used with Self Lock with SlamCAM.

Standard Mode RegulatoR operates with a fixed code. To change the code, follow the **Changing the User Code** steps on page 10.

To change the RegulatoR to Single Use or Standard Mode, follow the steps on page 9 to enter programming mode.

There is a **10** second programming time limit between each step. If RegulatoR times out or an error is made, programming will end and you will need to enter programming mode again.

1. Place RegulatoR into programming mode (see page 9).
 - a. To turn Single Use Mode “ON”: type **51** and then press **ENTER**.
OR
 - b. To return to Standard Mode: type **50** and then press **ENTER**.
2. If successful, the **green** indicator light will illuminate for 1 second.

Note: Returning to Standard Mode will reset the factory user default code (**1234**).

Continue programming or press **9** and then **ENTER** to exit programming.

CompX **RegulatoR**

Programming Single Use Timeout ON / Single Use Timeout OFF

Warning: Manual Lock - Single Use Timeout ON is a feature to prevent users from occupying a shared use locker or cabinet for a prolonged period of time. Turning this feature on will disable the user code after a programmable amount of time. After this time elapses, RegulatoR and can only be opened with the supervisor code.

To change the RegulatoR to Single Use Timeout ON or OFF, follow the steps on page 9 to enter programming mode.

There is a **10** second programming time limit between each step. If RegulatoR times out or an error is made, programming will end and you will need to enter programming mode again.

1. Place RegulatoR into programming mode (see page 9).
 - a. To set Timeout ON, type **2XX** and then press **ENTER**.
(**XX** represents a time period from 04 - 12 in whole hours.)

OR

- b. To turn Timeout OFF, type **20** and then press **ENTER**.
3. If successful, the **green** indicator light will illuminate for 1 second.

Continue programming or press **9** and then **ENTER** to exit programming.

CompX[®] **RegulatoR**[®]

Programming Security Timeout ON / Security Timeout OFF

Warning: Security Timeout ON will disable the RegulatoR from use for 5 minutes when 5 invalid attempts to unlock RegulatoR occur. During this time, RegulatoR will not unlock with either the valid user or supervisor code.

To change the RegulatoR to Security Timeout ON or OFF, follow the steps on page 9 to enter programming mode.

There is a **10** second programming time limit between each step. If RegulatoR times out or error is made, programming will end and you will need to enter programming mode again.

1. Place RegulatoR into programming mode see page 9).
 - a. To turn **Security Timeout ON**, type **11** and then press **ENTER**.
 - OR
 - b. To turn **Security Timeout OFF**, type **10** and then press **ENTER**.
2. If successful, the **green** indicator light will illuminate for 1 second.

Continue programming or press **9** and then **ENTER** to exit programming.

CompX **RegulatoR**

Reset User Code to Factory Default 1234

NOTE: Does not apply to Single Use Mode

To reset the **User Code** to the factory default **1234** follow the steps on page **9** to enter programming mode.

There is a **10** second programming time limit between each step. If RegulatoR times out or error is made, programming will end and you will need to enter programming mode again.

1. Place RegulatoR into programming mode (see page 9).
2. Type **8888** and then press the **ENTER** button.
3. If successful, the **green** indicator light will illuminate for 1 second.

Continue programming or press **9** and then **ENTER** to exit programming.

CompX **RegulatoR**

Technician Mode – Programming (Manual locking RegulatoR only)

When Technician Mode is ON, the programmed Technician Code can be used to unlock a locked Single Use Mode RegulatoR without erasing the existing single use code.

There is a **10** second programming time limit between each step. If RegulatoR times out or error is made, programming will end and you will need to enter programming mode again.

1. Place RegulatoR into programming mode (see page 9).
2. To turn Technician Mode ON: type **31** and then press **ENTER**.
3. Type the desired 4 to 8 digit Technician Code and then press **ENTER**.
4. Retype Technician Code and then press **ENTER**
5. **REMEMBER THIS CODE**

OR

To turn Technician Mode OFF: type **30** and then press **ENTER**

- If successful, the **green** indicator light will illuminate for 1 second.
- Press **9** followed by **ENTER** to exit Programming Mode

CompX *Regulator*[®]

Technician Mode - Operation

TO UNLOCK

1. Type the Technician Code and press **ENTER**.
2. Turn the knob clockwise 90° to the unlocked position (all three LED lights will have a rotating blinking pattern).
3. To relock & retain the single use code that already exists; rotate the knob 90° counter clockwise.

OR

To remove the existing single use code and leave the Regulator unlocked: Type the Technician Code and press **ENTER**.

Press **1** then press & hold **CLEAR** for 3 seconds.

CompX **RegulatoR**

Add User Without Specifying Memory Slot

The **Supervisor Code** memory location is called **Slot 01** and the first **User Code** is called **Slot 02**.

- Any additional User Codes reside in memory slots 03-20.
- To add a user code without specifying a memory slot (03 -20), follow the steps on page 9 to enter programming mode.

User codes must be 4 to 8 digits in length and must be different from all existing codes (including Slot 01 Supervisor & Slot 02 User codes).

There is a 10 second programming time limit between each step. If RegulatoR times out or an error is made, programming will end and you will need to enter programming mode again.

1. Place RegulatoR into programming mode (see page 9).
2. Press **410** and then press **ENTER**.
3. Type the new user code and press **ENTER**.
4. Retype the new user code and press **ENTER**.
5. If successful, the **yellow** indicator light will illuminate.

Continue programming or press **9** and then **ENTER** to exit programming.

CompX **RegulatoR**

Add User to Specific Memory Slot (03 – 20)

The **Supervisor code** memory location is called **Slot 01** and the first **User code** is called **Slot 02**.

- Any additional user codes reside in memory slots 03-20.
- To add a user code to a specific memory slot (03 -20), follow the steps on page 9 to enter programming mode.

User codes must be 4 to 8 digits in length and must be different from all existing codes (including Slot 01 Supervisor & Slot 02 User codes).

There is a 10 second programming time limit between each step. If RegulatoR times out or an error is made, programming will end and you will need to enter programming mode again.

1. Place RegulatoR into programming mode (see page 9).
2. Press **411** and then press **ENTER**.
3. Type memory slot to be added followed by **ENTER** (for memory slots 03 - 09, you must type leading “0” – e.g. “07” for slot 7)
4. Retype memory slot to be added followed by **ENTER**
5. Type the new user code and press **ENTER**.
6. Retype the new user code and press **ENTER**.
7. If successful, the **yellow** indicator light will illuminate.

Continue programming or press **9** and then **ENTER** to exit programming.

CompX *RegulatoR*

Delete User Without Specifying Memory Slot

The Supervisor code memory location is called Slot 01 and the first User code is called Slot 02.

- The additional user codes reside in memory slots 03-20.
- To delete a user code without specifying a memory slot (03 -20), follow the steps on page 9 to enter programming mode.

There is a 10 second programming time limit between each step. If RegulatoR times out or an error is made, programming will end and you will need to enter programming mode again.

1. Place RegulatoR into programming mode (see page 9).
2. Press **400** and then press **ENTER**.
3. Type the user code to be deleted and press **ENTER**.
4. Retype the user code to be deleted and press **ENTER**.
5. If successful, the **yellow** indicator light will illuminate.

Continue programming or press **9** and then **ENTER** to exit programming.

CompX[®] Regulator[®]

Delete User From Specific Memory Slot (03 – 20)

The **Supervisor code** memory location is called **Slot 01** and the first **User code** is called **Slot 02**.

- The additional user codes reside in memory slots 03-20.
- To delete a user code from a specific memory slot (03 -20), follow the steps on page 9 to enter programming mode.

There is a 10 second programming time limit between each step. If Regulator times out or an error is made, programming will end and you will need to enter programming mode again.

1. Place Regulator into programming mode (see page 9).
2. Press **401** and then press **ENTER**.
3. Type memory slot to be vacated followed by **ENTER** (for memory slots 03 - 09, you must type leading “0” – e.g. “07” for slot 7)
4. Retype memory slot to be vacated followed by **ENTER**.
5. If successful, the **yellow** indicator light will illuminate.

Continue programming or press **9** and then **ENTER** to exit programming.

CompX **RegulatoR**

RegulatoR Part Number Descriptions

Example: **REG-S-L-3-BK**

REG = Regulator Standard Knob

REGS = Regulator Short Knob

Version:

S = Self-locking; featuring SlamCAM

M = Manual locking, standard CompX National cams

Mounting:

L = Left hand mount, door application - hinge on left side when facing cabinet

R = Right hand mount door application - hinge on right side when facing cabinet

V = Vertical mount door application (keypad located above locking point)

T = Top vertical mount door application (keypad located below locking point)

Cylinder Length:

1 = 7/16" cylinder length

3 = 1-3/16" cylinder length

5 = 1-3/4" cylinder length

Color:

BK = Matte black housing & knob **WH** = Gloss white housing and knob

No suffix = Standard silver housing & knob

Replacement Parts

REG-KIT-KNOB - Replacement knob kit

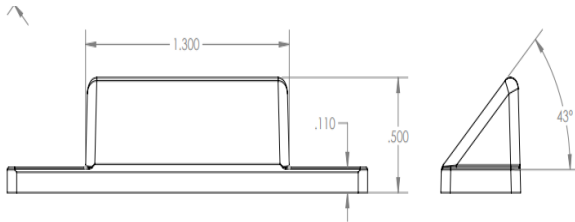
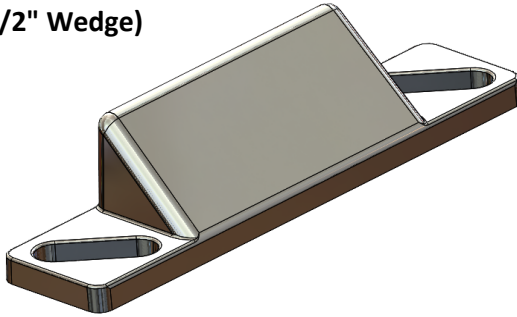
REG-KIT-KNOBS - Replacement short knob kit

213005000000J - Replacement battery door

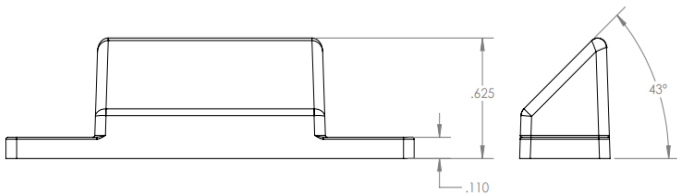
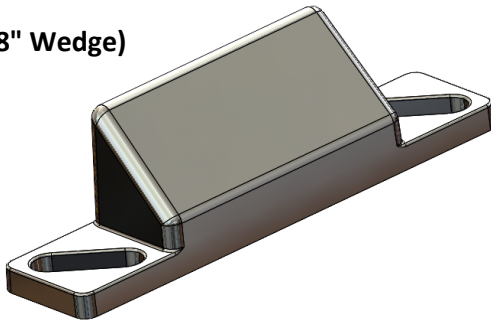
344759000000J- Wedge strike kit

CompX[®] Regulator[®]

WEDGE 1 (1/2" Wedge)



WEDGE 2 (5/8" Wedge)



CompX **Regulator**

SlamCAM spacer discs (if so equipped) can be inserted between the lock barrel and SlamCAM mechanism to adjust the backset. See image below:



FlexaCam adaptors (if so equipped) can be attached to the cam on manual versions to provide up to 12 different dimensional variations. See image below:



CompX[®] Regulator



1"

NOTE: Print this page and measure the line above. It is **ONE INCH LONG**. If it measures less than or more than one inch, the template measurements also need to be scaled accordingly.

FAILURE TO DO SO COULD RESULT IN MISDRILLED HOLES.

