

Totalizer/Pulser Complete Security Solution



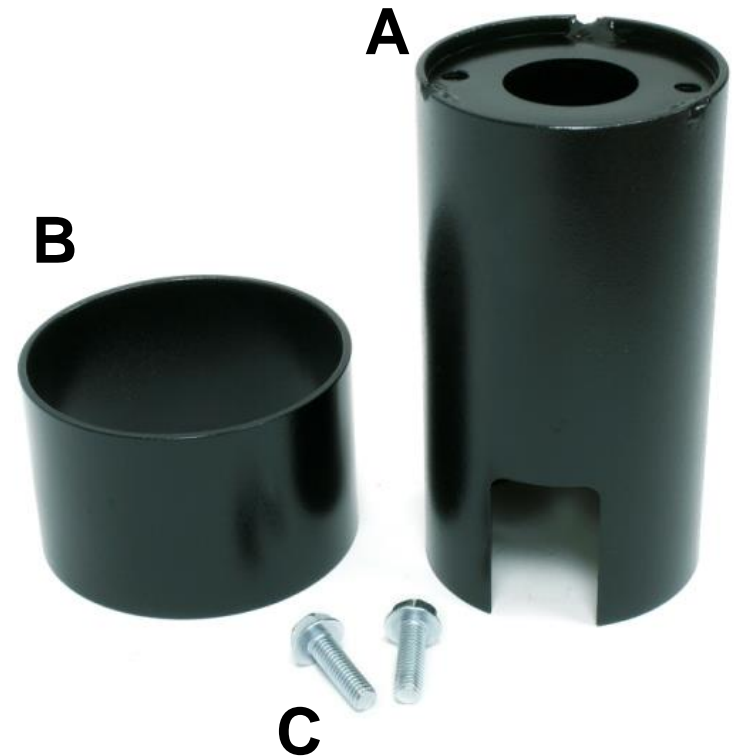
Pulser Security Sleeve Kit Part # PSS

CompX[®]

A. Lower Pulser Security Sleeve

B. Upper Pulser Security Sleeve

**C. #10-32 x 5/8 Mounting
Screws**

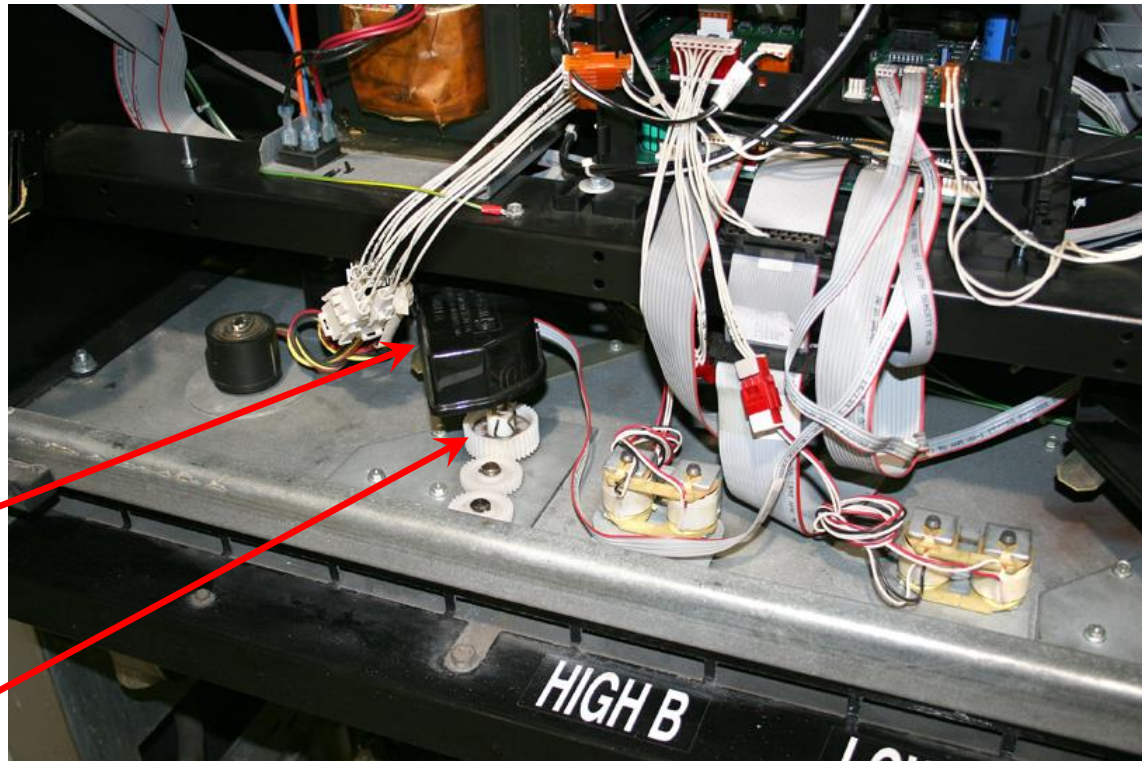


Pulser Security Sleeve Installation Instructions

1. Remove Pulser and Gear from Pulser Drive Shaft. Retain Clips for use in Step 6 of the Totalizer Security Cover Installation Instructions.

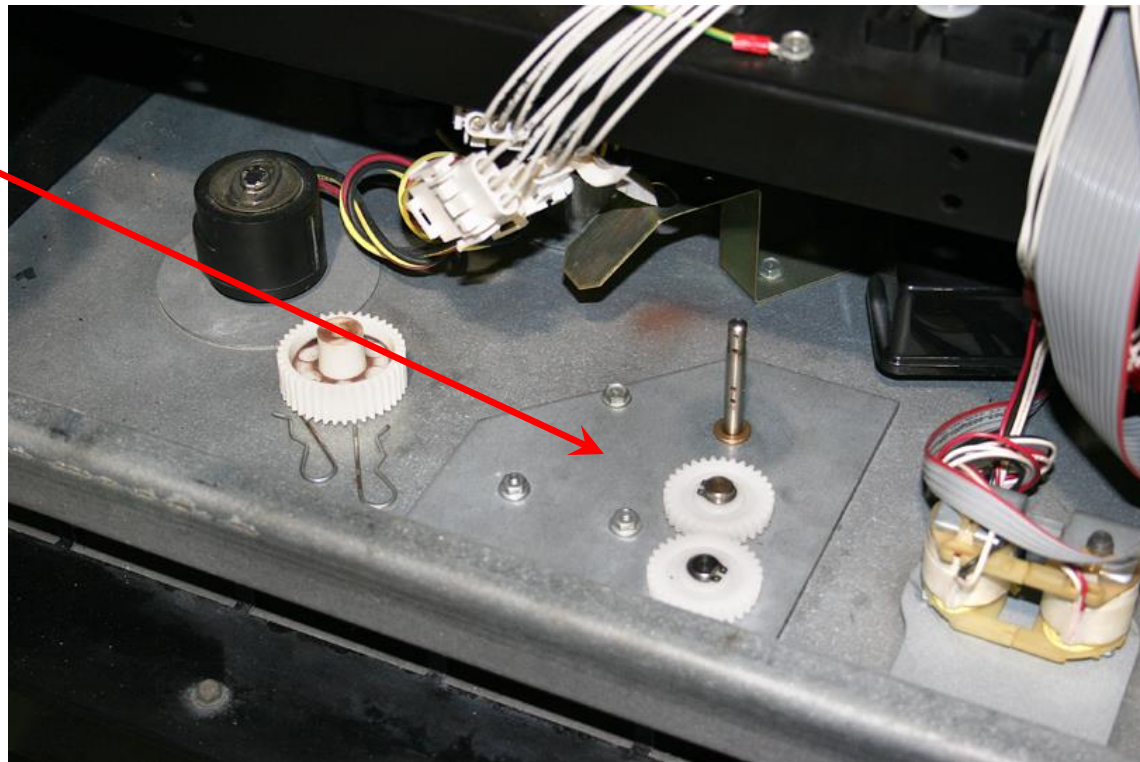
Pulser

Gear



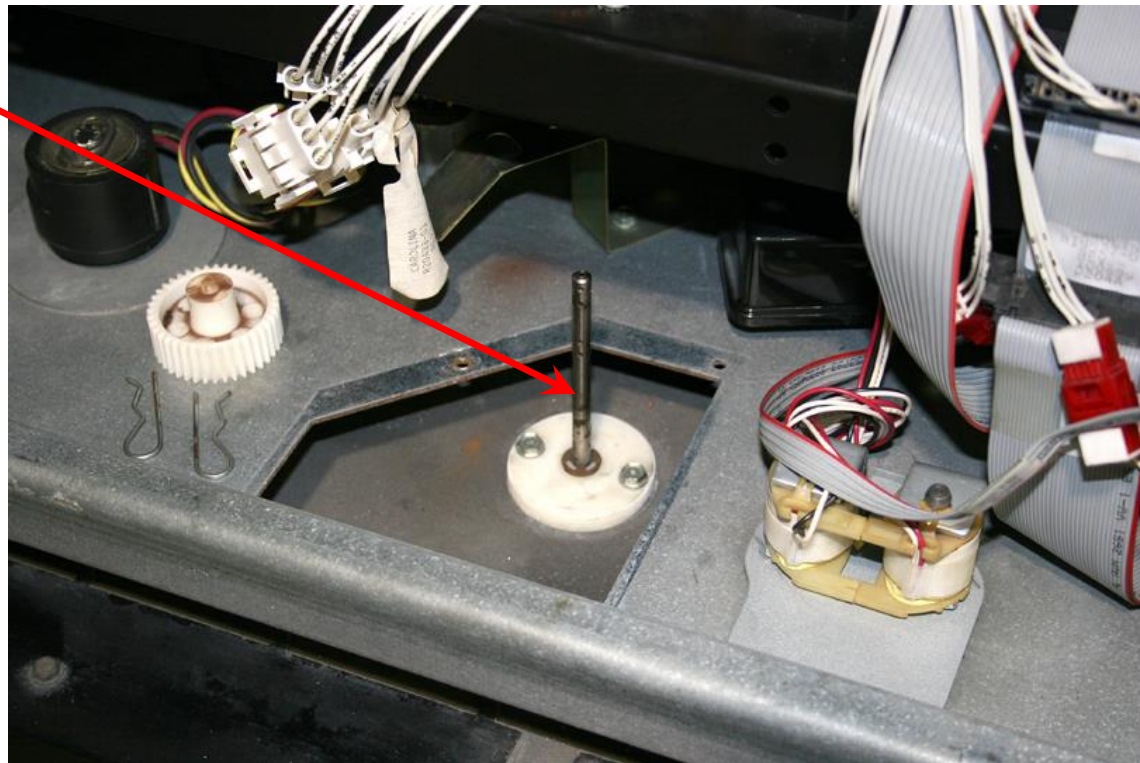
Pulser Security Sleeve Installation Instructions

2. Remove Totalizer Subassembly from Dispenser. Retain Screws for use in Step 5 of the Totalizer Security Cover Installation Instructions.



Pulser Security Sleeve Installation Instructions

3. Remove Drive Shaft Assembly from Dispenser. Discard Screws.



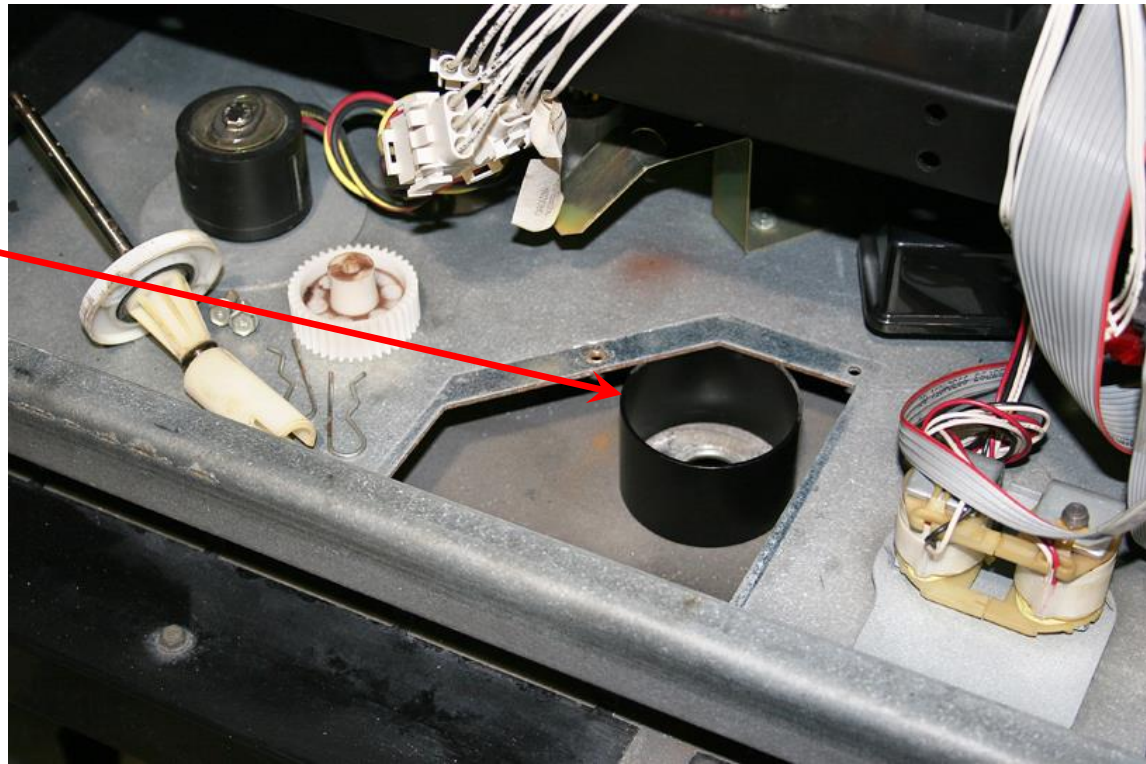
Pulser Security Sleeve Installation Instructions

4. Hold Lower Pulser Security Sleeve (A) as shown. Move Sleeve up into pump cavity and swing up and over the Drive Shaft Link on top of pump. Use your left hand to guide the Pulser Sleeve from the back side of the pump. The slot in the Pulser Sleeve should be rotated to the inside of the Dispenser.



Pulser Security Sleeve Installation Instructions

5. Install the Upper Pulser Security Sleeve (B) in between the upper and lower panels as shown.



Pulser Security Sleeve Installation Instructions

6. Insert Drive Shaft Assembly down into place making sure engagement is made with the Drive Shaft Link on top of pump.

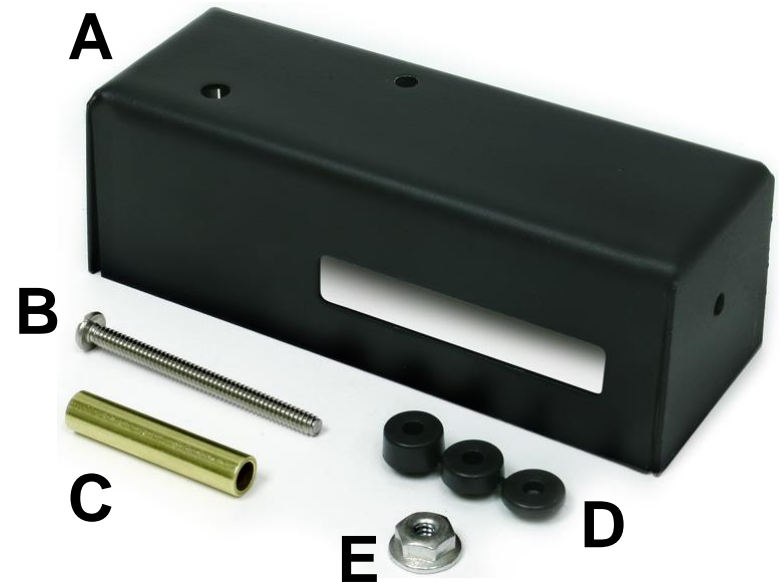
7. Holding the Lower Pulser Security Sleeve (A) up against the lower panel

from the underside, install one screw (H) thru Drive Shaft Assembly, lower panel and into one hole of the Lower Pulser Security Sleeve. DO NOT tighten screw. Rotate Lower Pulser Sleeve to line up second hole with the lower panel and install second Screw (H). Tighten both screws. Complete installation by installing Totalizer Security Cover Kit.



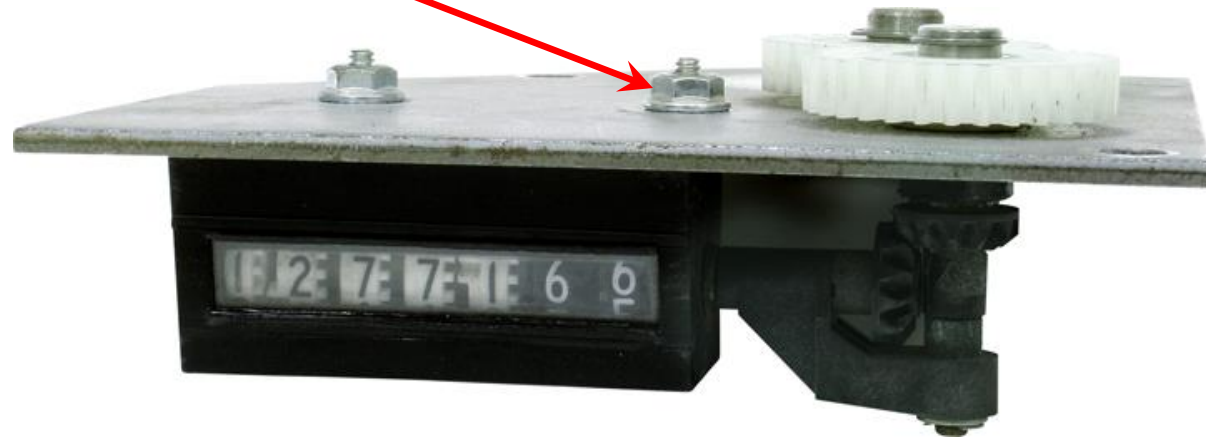
Totalizer Security Cover Kit Part # TSC

- A. Totalizer Security Cover
- B. #6-32 x 1-3/4 S.S. Screw
- C. Brass Sleeve
- D. Anti-Pry Pin Tree
- E. #6-32 Flange Nut (Not Supplied; Existing from Totalizer)



Totalizer Security Cover Installation Instructions

1. Remove only right side
Flange Nut and screw from
Totalizer Subassembly.
Retain Flange Nut (E).
Discard screw.



Totalizer Security Cover Installation Instructions

2. Insert Screw (B) thru rear hole in Cover (A) and slide Sleeve (C) over Screw as shown.



Totalizer Security Cover Installation Instructions

3. Holding Cover, Screw and Sleeve from step 2, lower Totalizer Subassembly into Cover and feed screw tip thru hole in Totalizer Mounting Plate. Assemble #6-32 Flange Nut (E) retained in step 1 and tighten securely.



⚠ Make sure window in Cover is centered with window in counter.

Totalizer Security Cover Installation Instructions

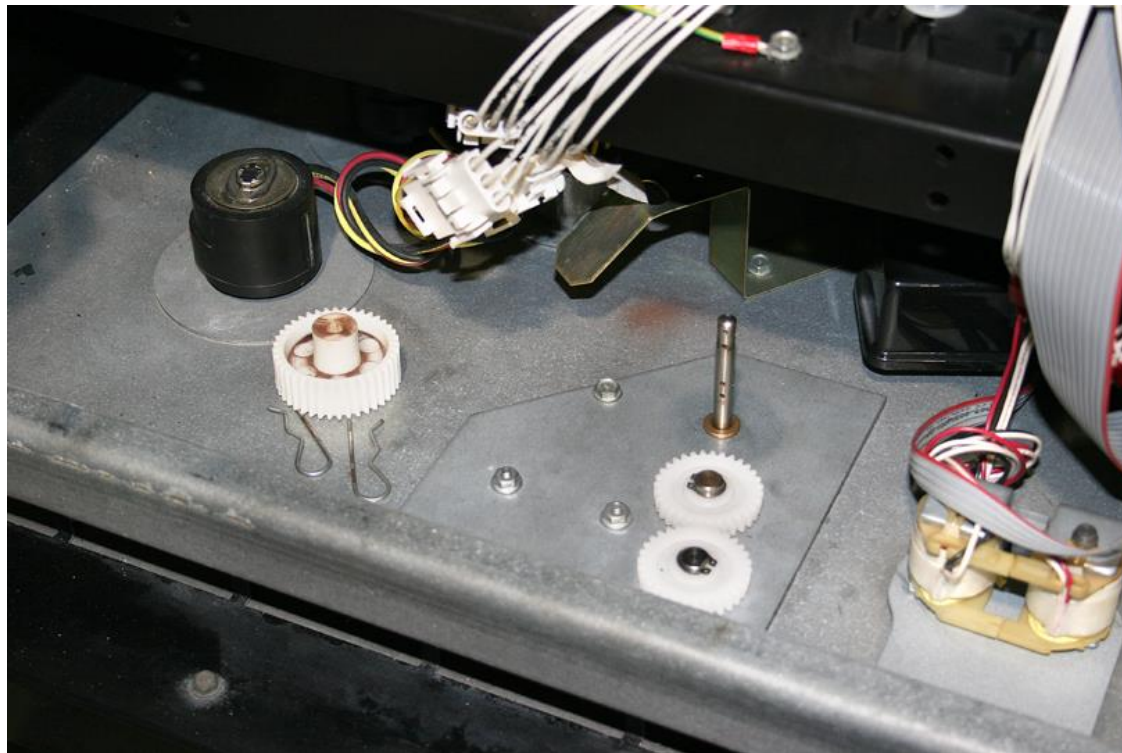
4. Remove desired thickness Anti-Pry Pin (D) from tree and press into hole as shown.



Note: The appropriate thickness of Anti-Pry Pin used is based on gap between bottom of cover and top of lower panel.

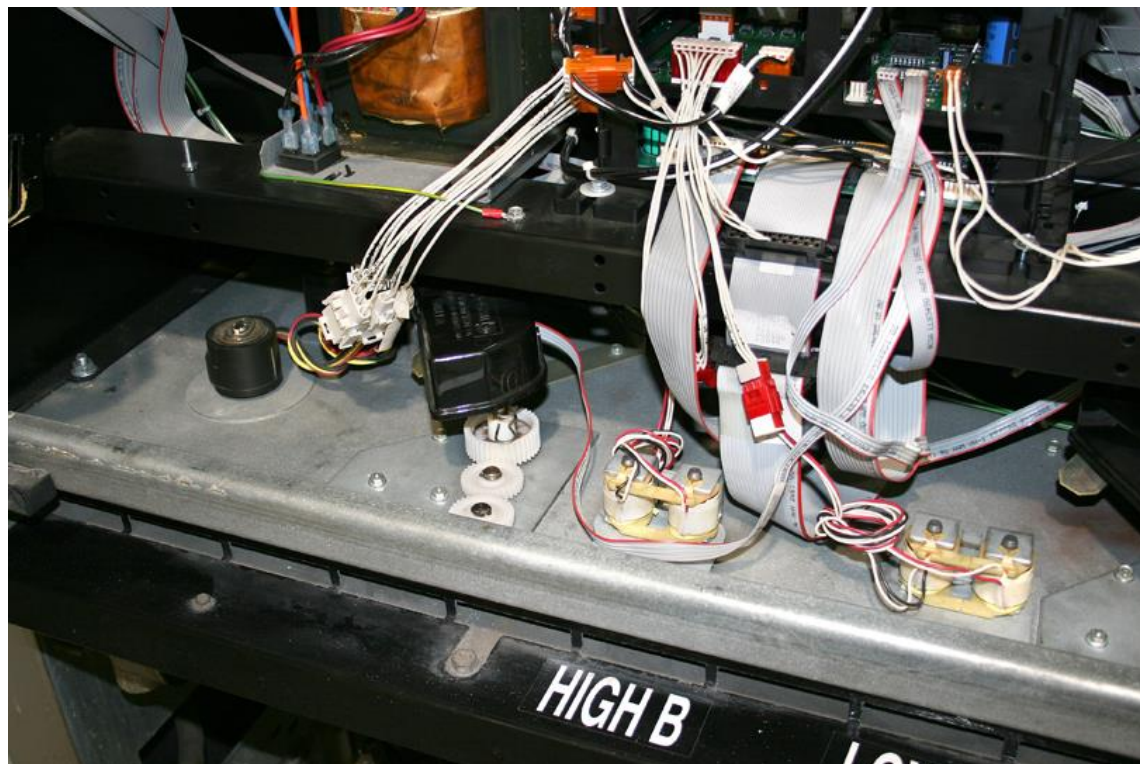
Totalizer Security Cover Installation Instructions

5. Reassemble the Totalizer Subassembly over Pulser Shaft and secure with the two screws retained in step 2 of the Pulser Security Sleeve Installation Instructions.



Totalizer Security Cover Installation Instructions

6. Reassemble Gear and Pulser to Dispenser with two clips retained in step 1 of the Pulser Security Sleeve Installation Instructions.



Totalizer/Pulser Security Cover Kits

**Repeat Pulser and Totalizer Security Cover Installation
Instructions for remaining pumps on Dispenser.**