

TuBAR[®]/Turbine Retrofit for Gilbarco Encore Multi-Point Latch

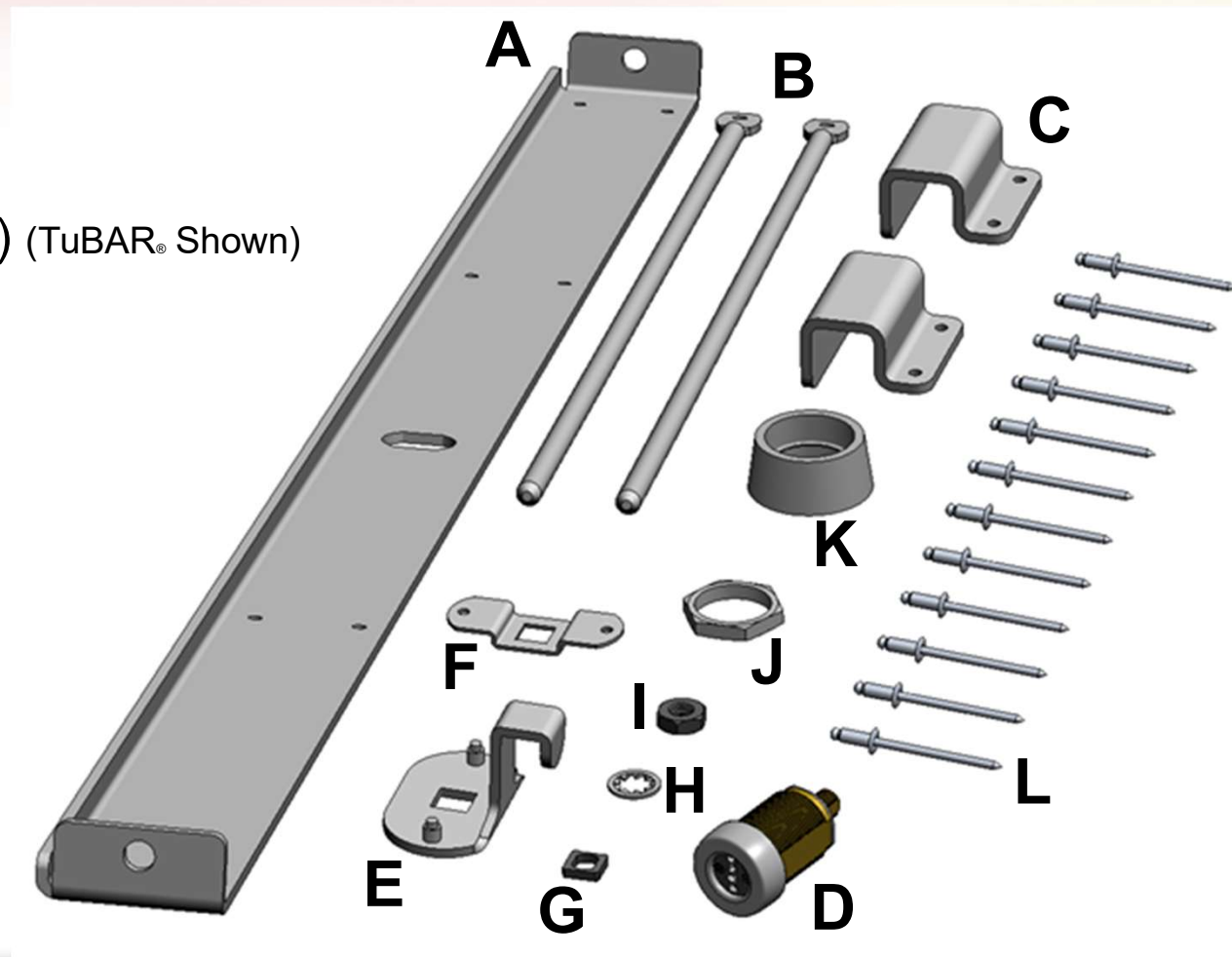


GAS THEFT & SKIMMING!

TuBAR®/Turbine Multi-Point Latch

Retrofit: Encore Part # MPL-GE

- A. Door Bracket (1)
- B. Locking Bar Rod (2)
- C. Bottom Bracket (2)
- D. TuBAR®/Turbine Lock Assy (1) (TuBAR® Shown)
- E. Latch Plate Assy (1)
- F. Rod Retainer Plate (1)
- G. Cam Adapter (1)
- H. Lock Washer 9/32 INT (1)
- I. Hex Nut 9/32-28 (1)
- J. Hex Nut 3/4-27 (1)
- K. Protecting Collar (1)
- L. Pop Rivet Ø.125 (12)

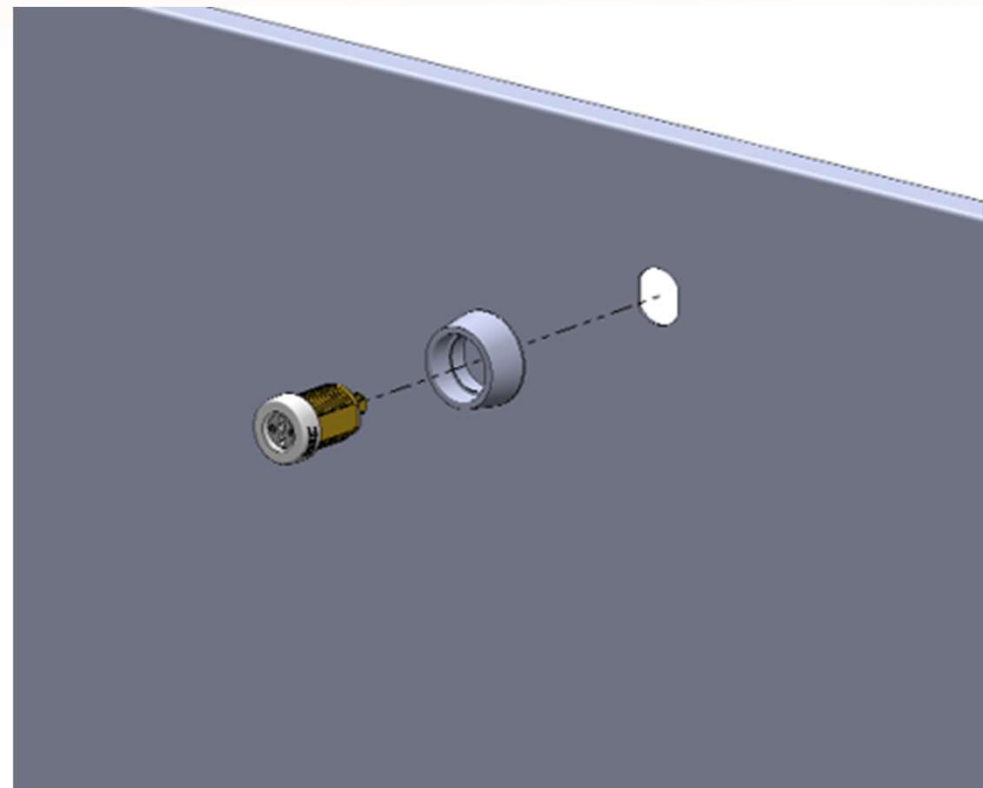


STOP GAS THEFT & SKIMMING!

TuBAR®/Turbine Multi-Point Latch

Retrofit: Encore Part # MPL-GE-1

1. Insert the Lock Assembly (D) into Protecting Collar (K) then into existing lock hole in Lower Door Panel.

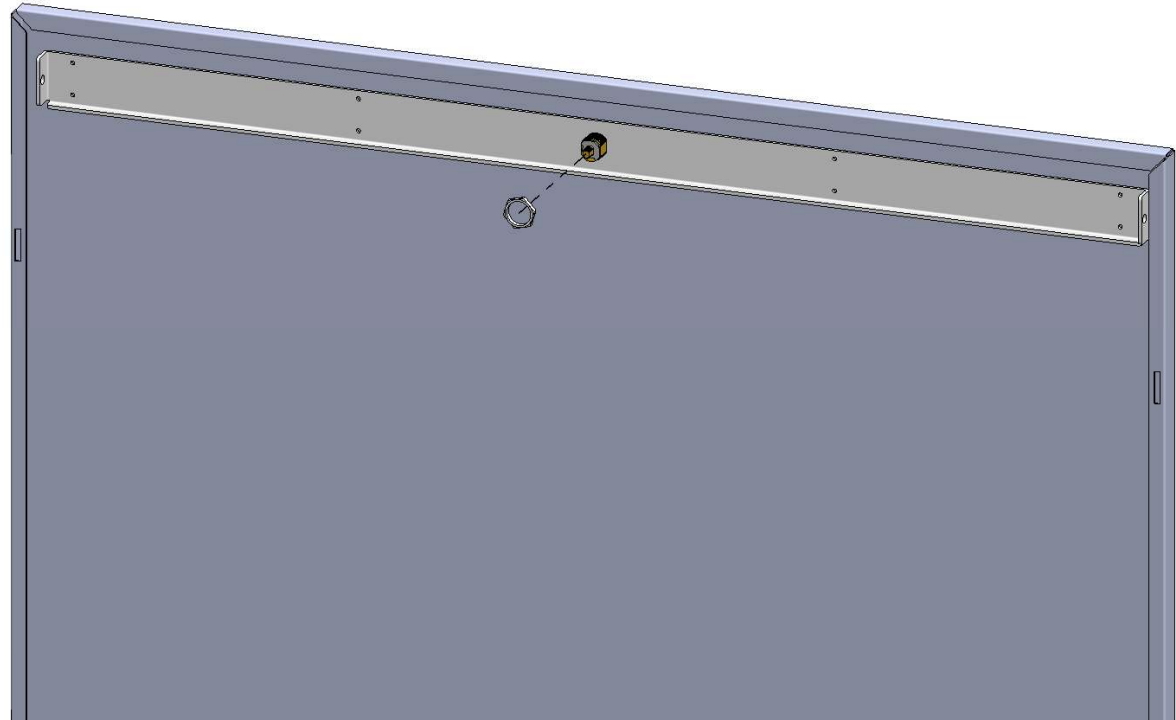


GAS THEFT & SKIMMING!

TuBAR®/Turbine Multi-Point Latch

Retrofit: Encore Part # MPL-GE-1

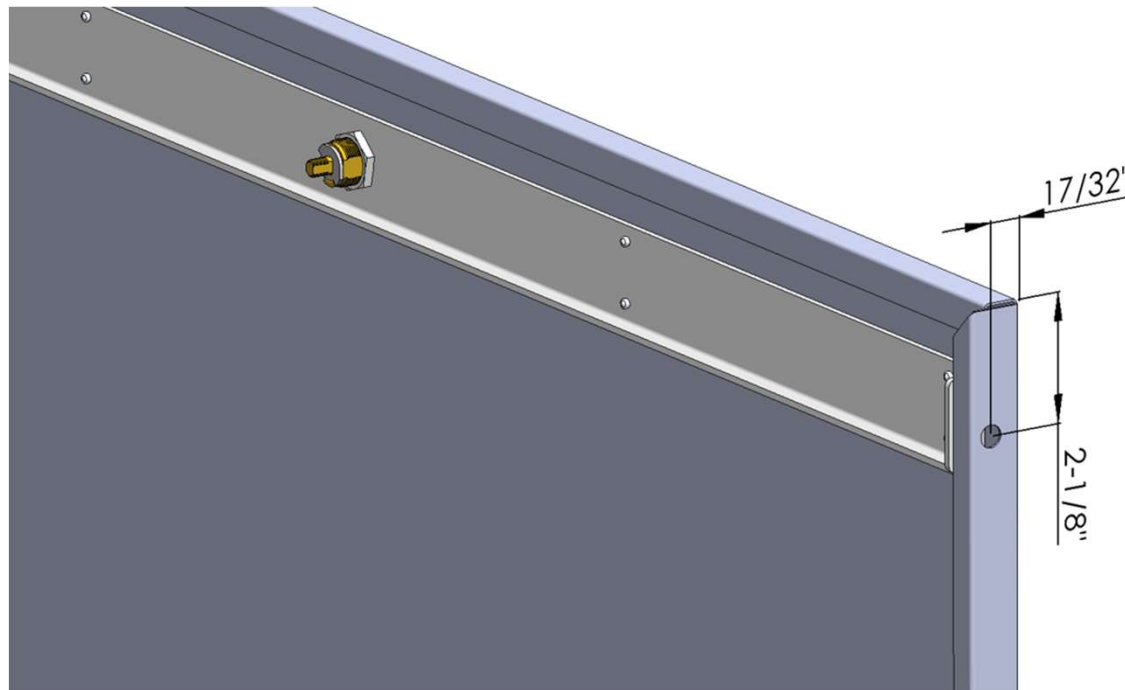
2. Install Door Bracket (A) over Lock Assy and assemble $\frac{3}{4}$ -27 Hex Nut (J). Hand tighten nut until after the first Pop Rivet (L) is installed.
3. Level Door Bracket (A) with top edge of the Door Panel.
4. Drill (1) $\text{\O}1/8$ hole using Door Bracket(A) as a drill template.
5. Insert (1) Pop Rivet (L) into hole and crimp with finish side of rivet on the outside of the Door Panel.
6. Tighten $\frac{3}{4}$ -27 Hex Nut (J).
7. Drill and install Pop Rivets(M) in the remaining 7 holes.



STOP GAS THEFT & SKIMMING!

TuBAR®/Turbine Multi-Point Latch

Retrofit: Encore Part # MPL-GE-1



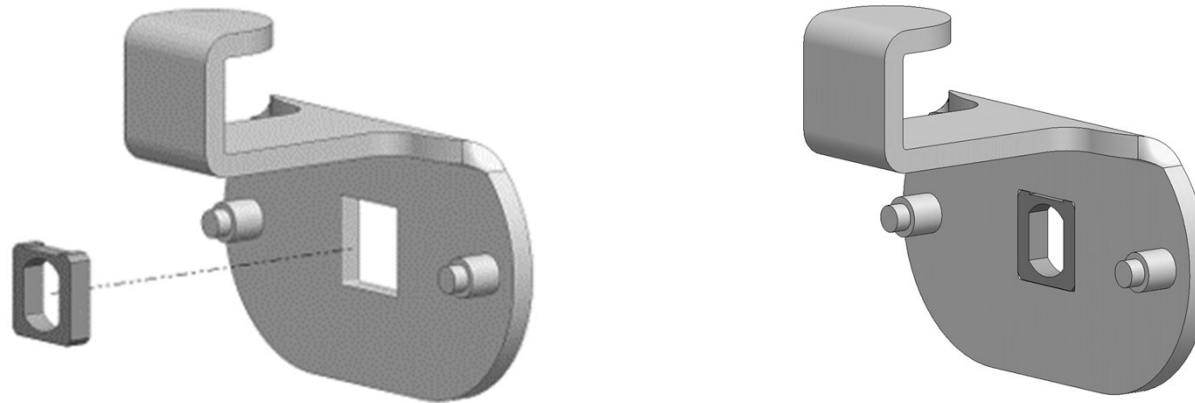
8. Drill (2) Ø3/8" holes in both sides of Door Panel in the approximate location shown from top and front faces.

STOP GAS THEFT & SKIMMING!

TuBAR®/Turbine Multi-Point Latch

Retrofit: Encore Part # MPL-GE-1

9. Press in Cam Adapter(G) into Latch Plate Assy(E) as shown.

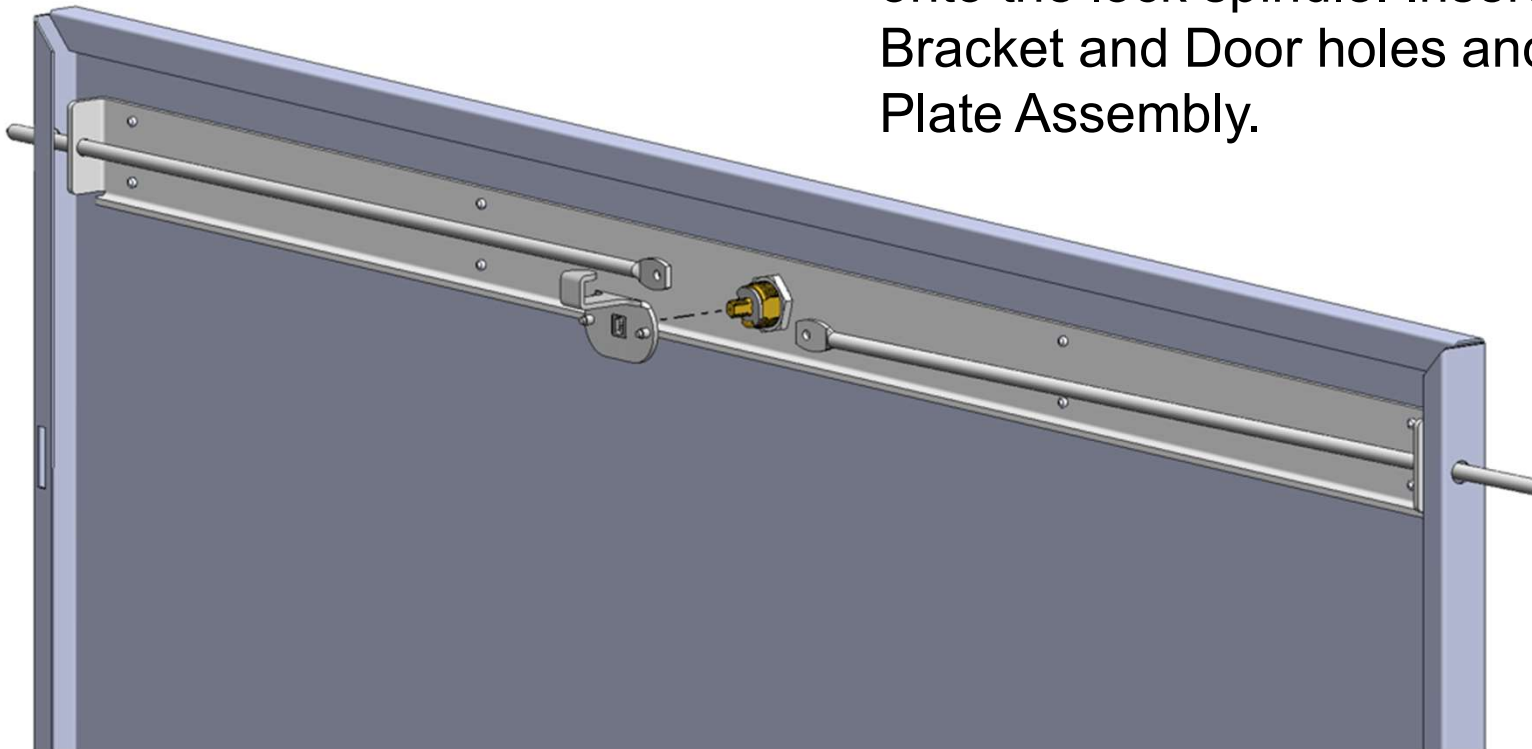


STOP GAS THEFT & SKIMMING!

TuBAR®/Turbine Multi-Point Latch

Retrofit: Encore Part # MPL-GE-1

10. Assemble Latch Plate assembly from Step 9 onto the lock spindle. Insert Rods through Bracket and Door holes and attach to Latch Plate Assembly.

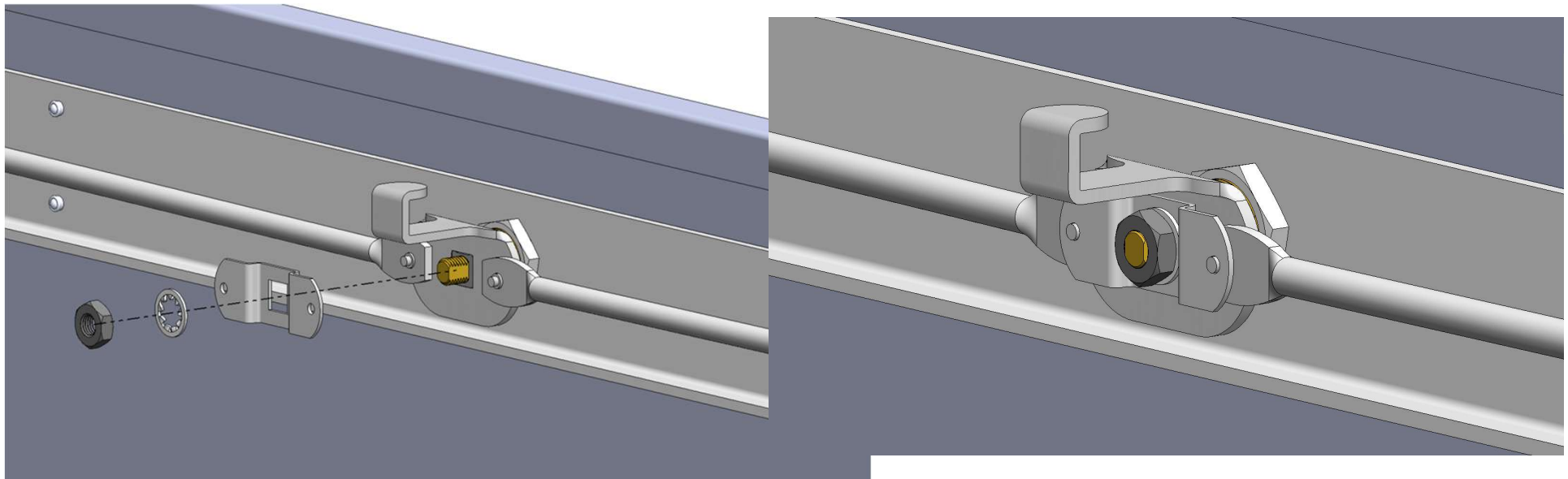


GAS THEFT & SKIMMING!

TuBAR®/Turbine Multi-Point Latch

Retrofit: Encore Part # MPL-GE-1

11. Assemble Retainer Plate(G), Lock Washer(H) and Hex Nut(I) and tighten.

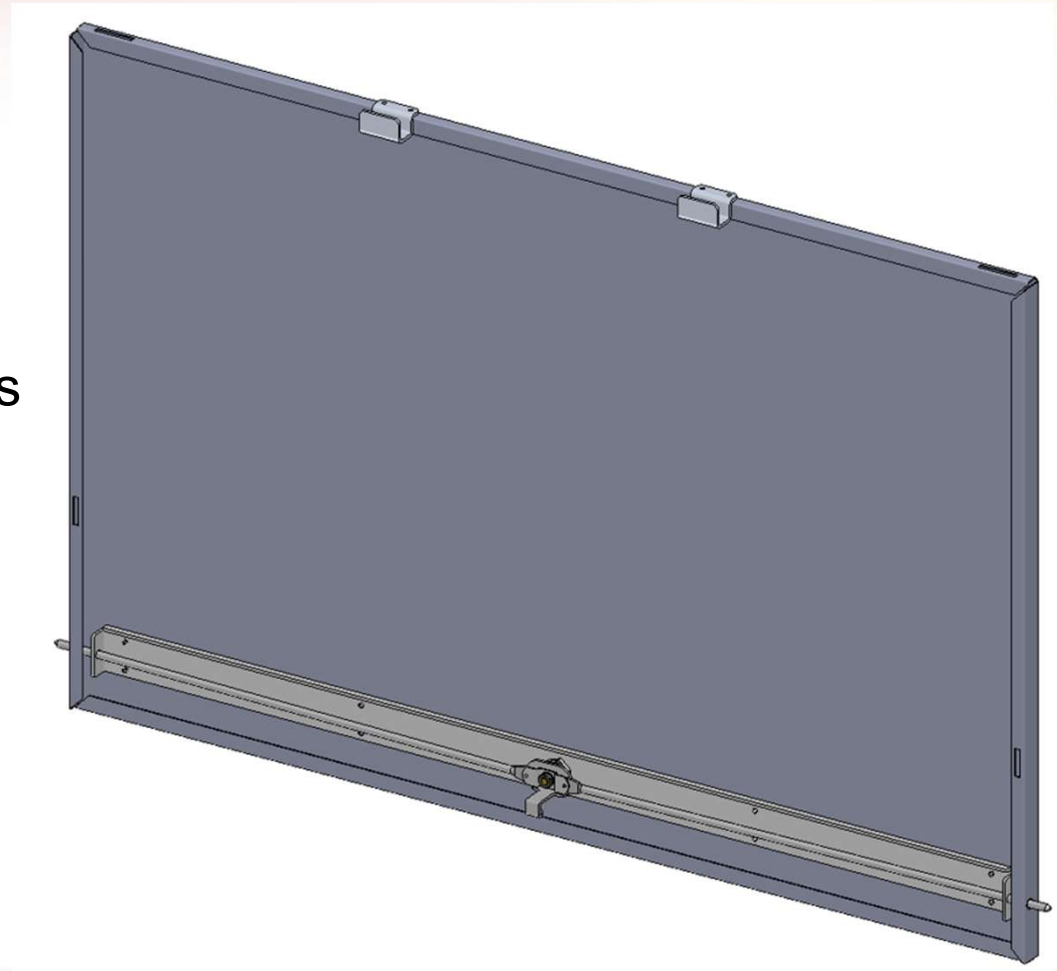


STOP GAS THEFT & SKIMMING!

TuBAR®/Turbine Multi-Point Latch

Retrofit: Encore Part # MPL-GE-1

12. Flip Door Panel Upside down.
Place Bottom Brackets(C) onto bottom edge facing the inside of the door in the approximate location shown. Using the Brackets as a template, drill (4) $\text{Ø}1/8$ " holes in the bottom of the Door Panel and install (4) Rivets(L).

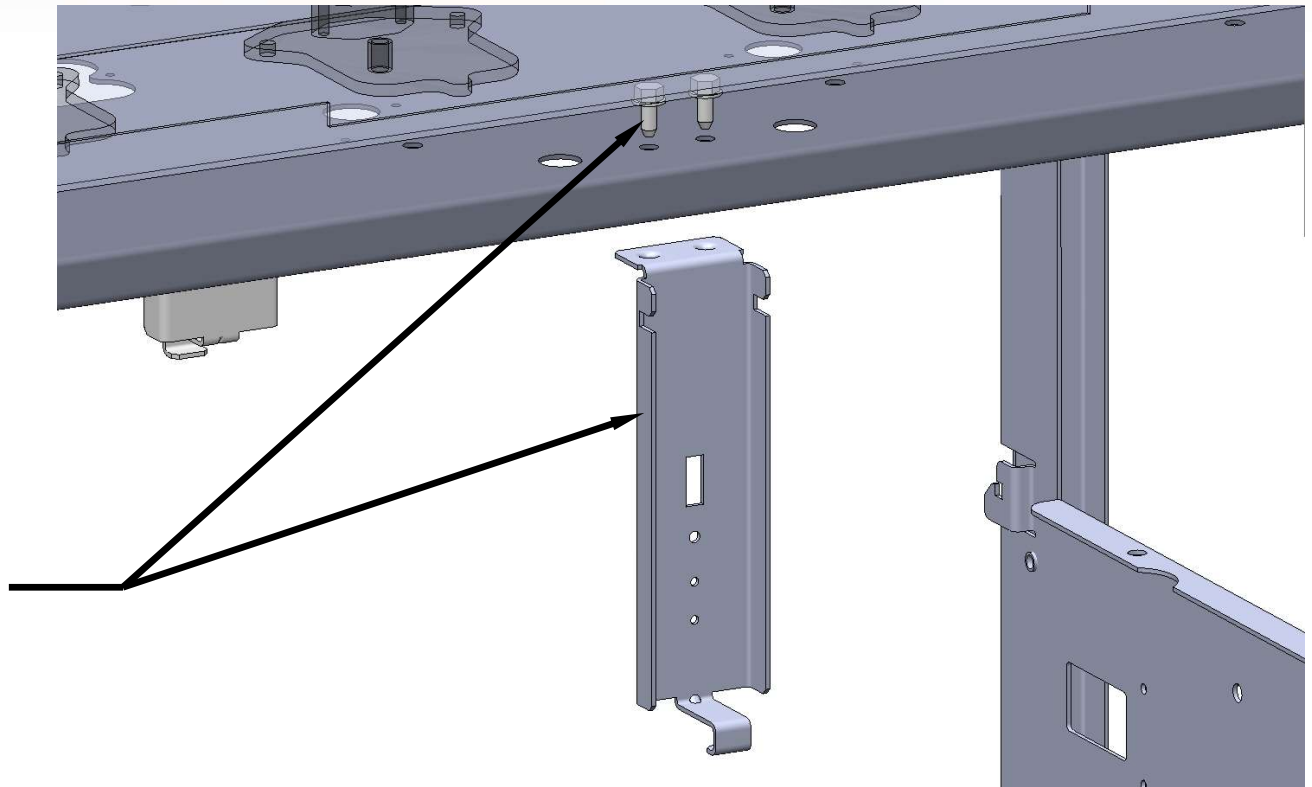


GAS THEFT & SKIMMING!

TuBAR®/Turbine Multi-Point Latch

Retrofit: Encore Part # MPL-GE-1

13. Remove two fasteners
and Strike from Pump.

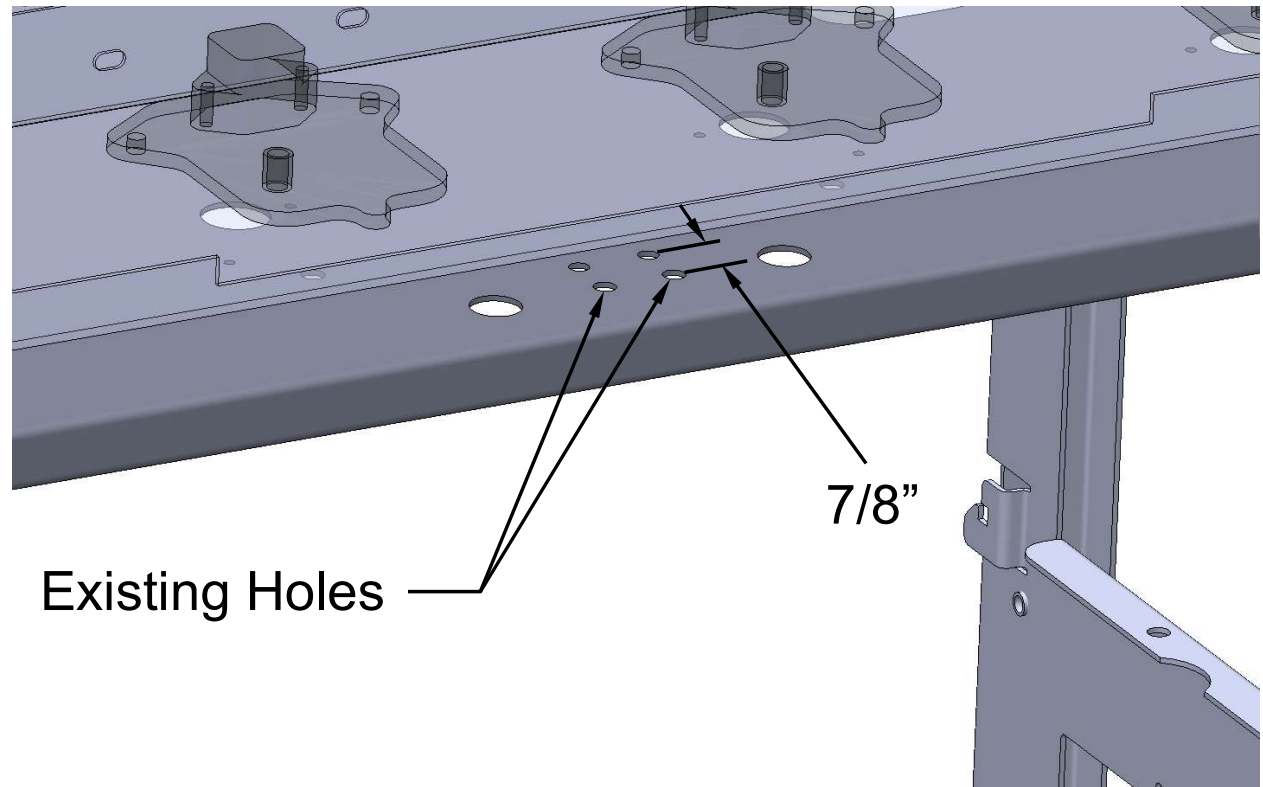


GAS THEFT & SKIMMING!

TuBAR®/Turbine Multi-Point Latch

Retrofit: Encore Part # MPL-GE-1

14. Drill (2) $\text{Ø}3/8$ " holes from underneath $7/8$ " back from existing holes.



STOP

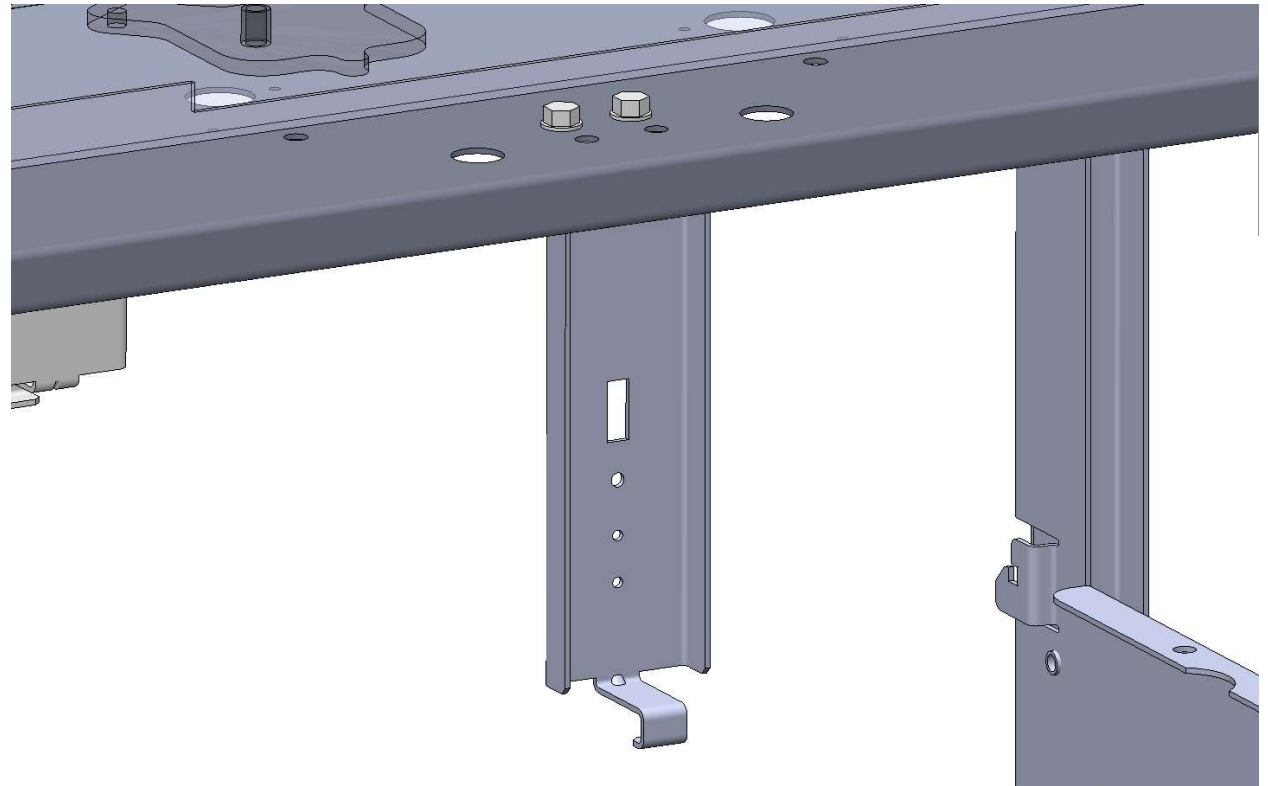
GAS THEFT & SKIMMING!

TuBAR®/Turbine Multi-Point Latch



Retrofit: Encore Part # MPL-GE-1

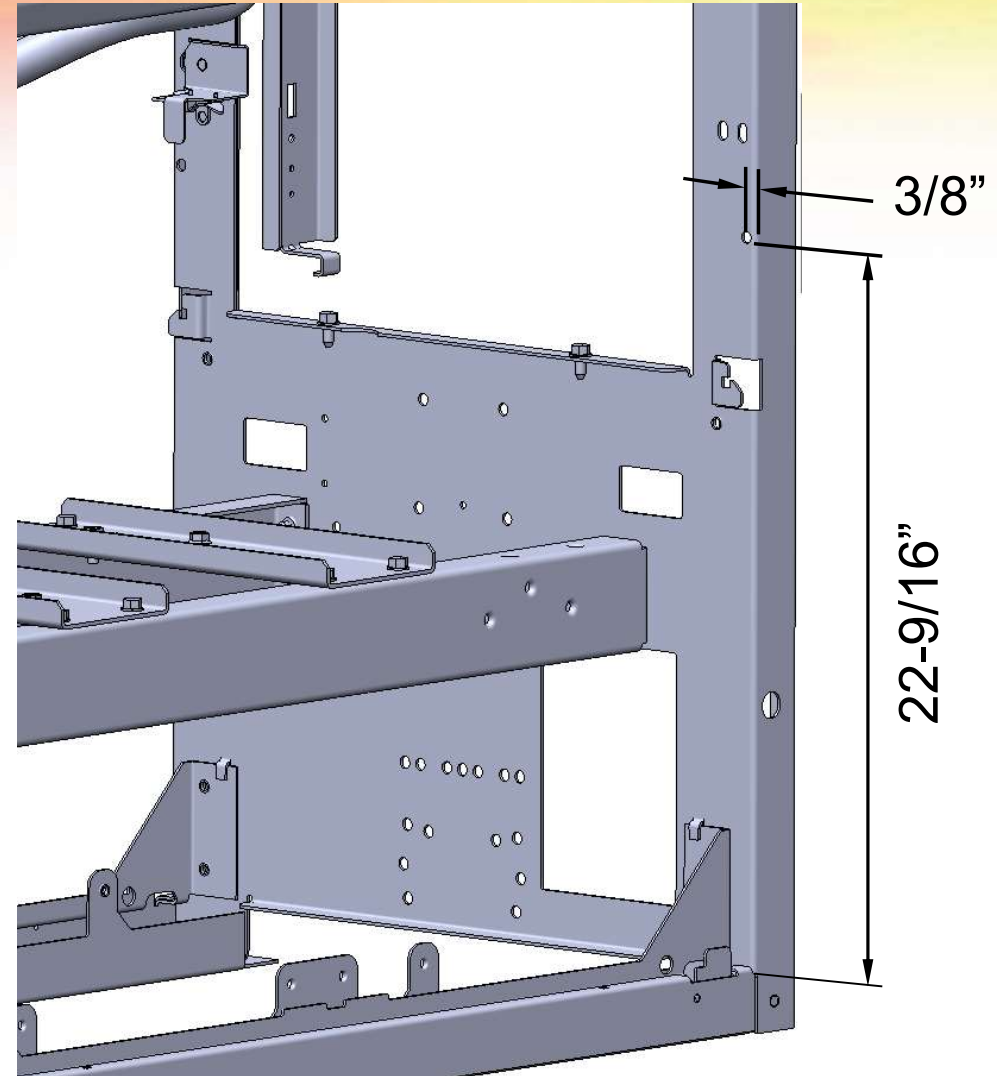
15. Re-install Strike with existing fasteners in the new rearward holes.



GAS THEFT & SKIMMING!

TuBAR®/Turbine Multi-Point Latch Retrofit: Encore Part # MPL-GE-1

16. Drill $\text{Ø}3/8$ " holes in both sides of the frame in the approximate location shown.



STOP GAS THEFT & SKIMMING!