

# TuBAR<sup>®</sup>/Turbine

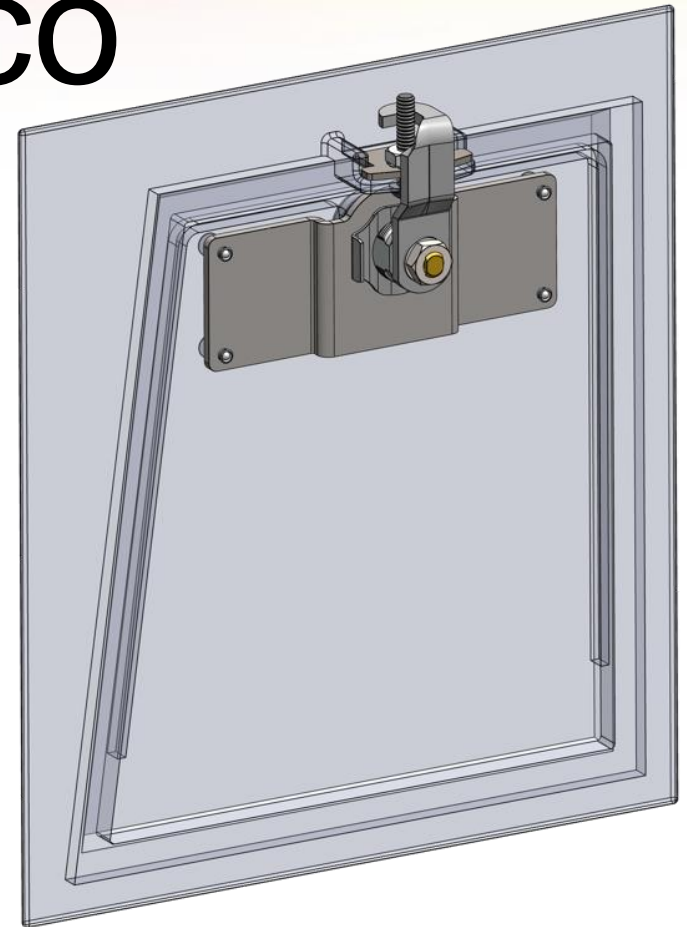


# Reinforcement

# Retrofit for Gilbarco

# Encore 700

# Printer Door

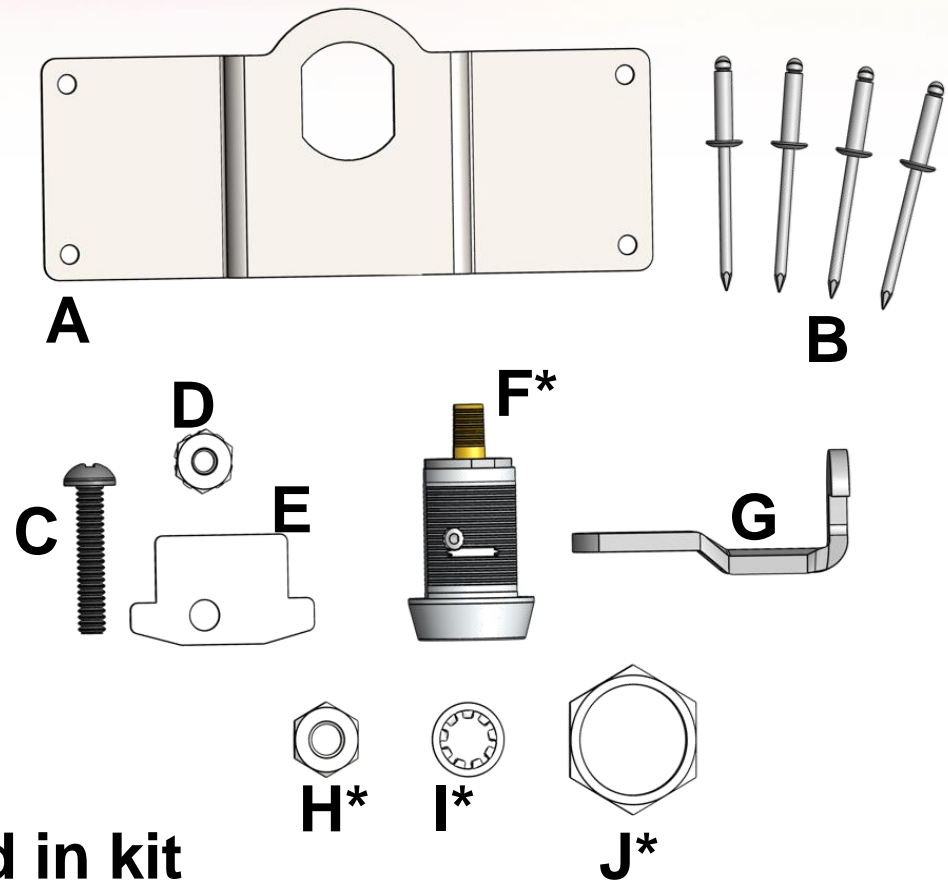


**GAS THEFT & SKIMMING!**

# Printer Door Retrofit: Encore 700 Part# GE-HSC-RDRP-K



- A. Reinforcement plate (1ea)
- B. Rivets (4ea)
- C. 8-32X3/8 Pan Head Phil Sems Screw(1ea)
- D. 8-32 Hex Keps Nut (1ea)
- E. Tab Plate(1ea)
- F. Lock Assy \* (Turbine shown)
- G. Hook Cam (1ea)
- H. 9/32"-28 Hex Nut \*
- I. 9/32" Lock Washer \*
- J. Hex Nut 3/4-27 \*



\* Not included in kit

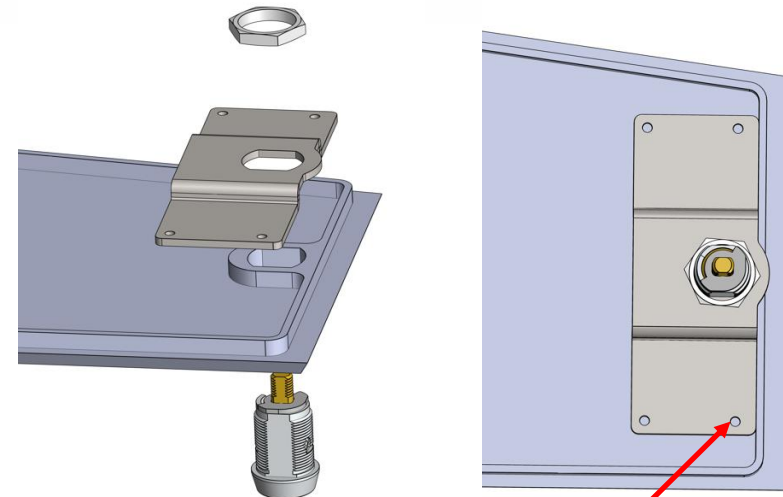


**STOP GAS THEFT & SKIMMING!**

# Printer Door Retrofit: Encore 700 Part# GE-HSC-RDRP-K



- 1) Open main door.
- 2) Remove printer door lock.
- 3) Mount CompX Lock Assy (F) and Reinforcement Plate (A) with Hex Nut  $\frac{3}{4}$ -27 (J).
- 4) Drill holes for rivets (B) with 1/8" bit.
- 5) Rivet Reinforcement plate to door.



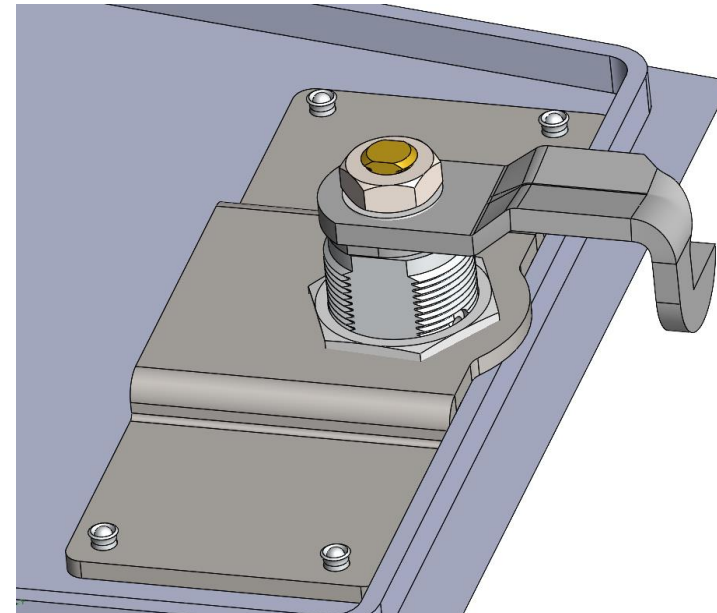
Drill & Rivet (4x)



**GAS THEFT & SKIMMING!**

# Printer Door Retrofit: Encore 700 Part GE-HSC-RDRP-K

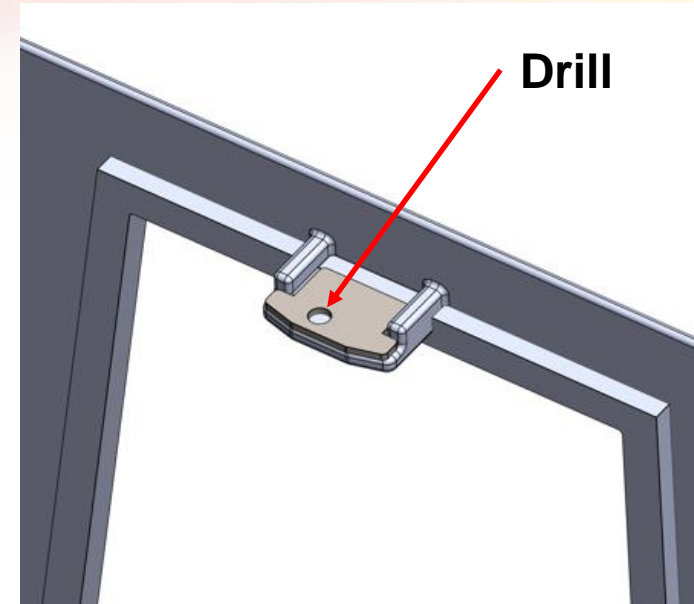
- 6) Mount hook cam (G) with lock washer (I) and nut (H).
- 7) Place tab reinforcement plate (E) on tab with hole to the left.



**GAS THEFT & SKIMMING!**

# Printer Door Retrofit: Encore 700 Part# GE-HSC-RDRP-K

- 8) Drill through hole with bit a bit within the range No.4-No.10 or 13/64ths

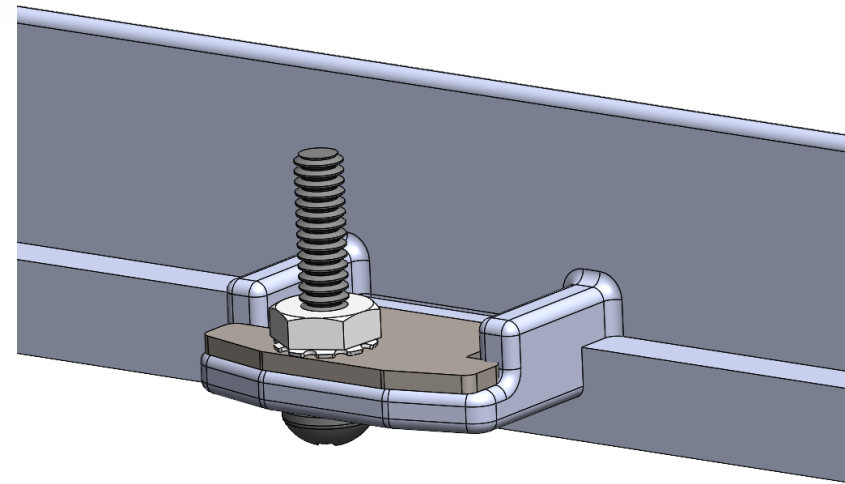


**GAS THEFT & SKIMMING!**

# Printer Door Retrofit: Encore 700 Part# GE-HSC-RDRP-K



- 9) Mount tab reinforcement (E) plate with pan head screw (C) and Keps nut (D)



**GAS THEFT & SKIMMING!**