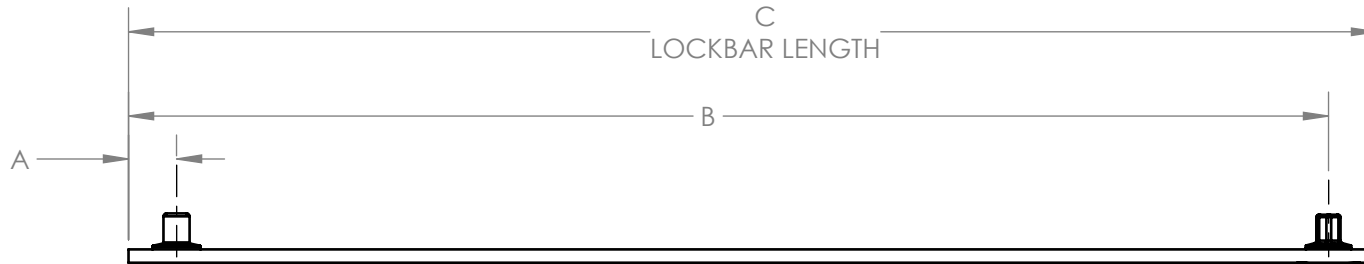
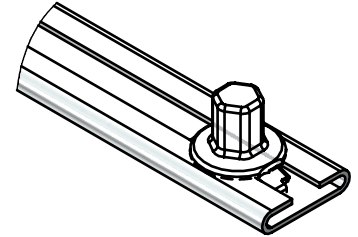


FIXED PIN LB-R90  
(INSTALLED BY CompX)

ADJUSTABLE PIN AP-037  
(CAN BE INSTALLED BY CompX  
OR CUSTOMER)



NOTES:

1. A & B PIN **MUST** BE SET AT .500" CENTER OF PIN TO END OF LOCKBAR.
2. IF B PIN INSTALLED BY CUSTOMER NOTE N/A FOR B DIMENSION AND PIN P/N

CUSTOMER NAME: \_\_\_\_\_

CUSTOMER P/N: \_\_\_\_\_

C DIMENSION: \_\_\_\_\_



A DIMENSION: .500

PIN P/N: \_\_\_\_\_

B DIMENSION: \_\_\_\_\_

PIN P/N: \_\_\_\_\_

CUSTOMER REVISION: \_\_\_\_\_

DIMENSIONS ARE IN INCHES TOLERANCES: ±1/32" FRACTIONAL: ANGULAR: TWO PLACE DECIMAL: THREE PLACE DECIMAL: REFERENCE DIMENSIONS:		NAME	DATE	DATE	DRAWING#
MATERIAL		M. GONG	12/9/2022	12/9/2022	F-125
FINISH		CHECKED			DESCRIPTION SYS-400 LINKAGE BAR SET UP
DO NOT SCALE DRAWING		ENG APPR.			
		MFG APPR.			
		Q.A.			
		COMMENTS:			 
		715 Center Street Grayslake, IL 60030			

REV.	ECO	DESCRIPTION	DATE	BY
REVISIONS				