

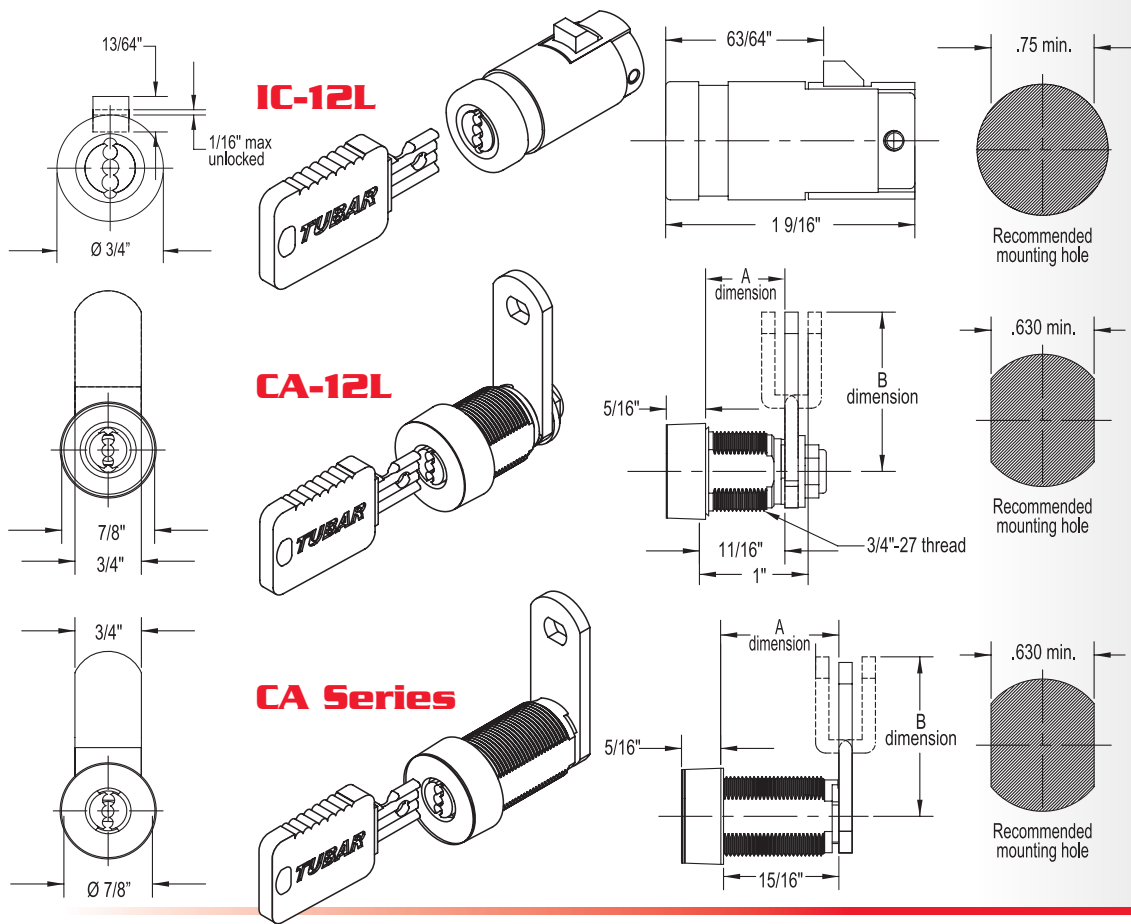
TuBAR



One *tough* lock. Unlimited applications.

Every high security TuBAR lock offers:

- ◆ Hardened steel barrel, composite keyway and dual side bar mechanism assure maximum protection against forced entry. Virtually impregnable to pulling, punching, drilling and other common physical attacks.
- ◆ Unique keyway with no key blanks or key machines commercially available
- ◆ Registered key series for each customer
- ◆ Replacement keys only available by signature through the factory
- ◆ Keys and cams sold separately
- ◆ Popout lock meets NAMA t-handle dimension standards in vending machines



ALL TuBAR are high security locks and are designed for a wide range of applications:

- ◆ Access control systems
- ◆ Alarm control cabinets
- ◆ Burglar alarms
- ◆ Cash drawers
- ◆ Cash registers
- ◆ Coin laundry equipment
- ◆ Currency changers
- ◆ Desks
- ◆ Fire watch stations
- ◆ Gas pump dispensers
- ◆ Gun cabinets
- ◆ Key storage cabinets
- ◆ Lockers
- ◆ Mechanical counters
- ◆ Motorcycle locks
- ◆ Narcotics cabinets
- ◆ Safes
- ◆ Toll booths
- ◆ Tool cabinets
- ◆ Transit collection systems
- ◆ Vending machines
- ◆ many more!

All TuBAR locks feature:

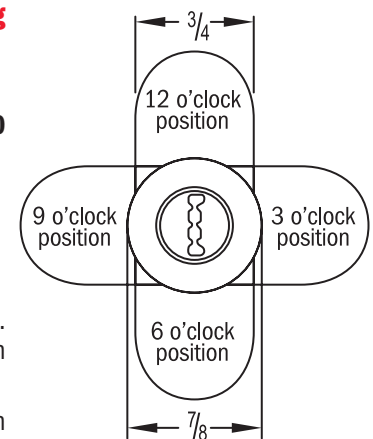
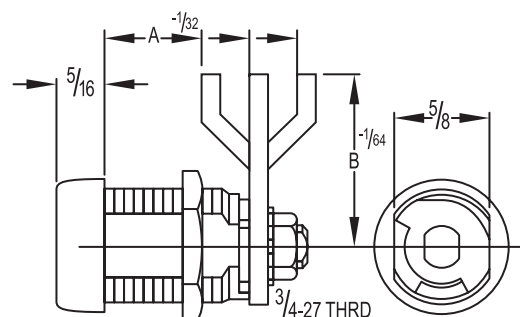
- ➔ Maximum protection against forced entry. Virtually impregnable to pulling, punching, drilling and other common physical attacks.
- ➔ Dual side bar mechanism provides the ultimate in resistance to surreptitious entry
- ➔ Registered key series for each customer
- ➔ Unique key with no key blanks or key machines commercially available

High security inner cylinder

- ➔ Improved hardened steel barrel and composite keyway assures maximum protection from vandal attacks
- ➔ User friendly key design will accommodate all TuBAR cylinders in the field
- ➔ Compact 11/16" size ideal for limited installation space
- ➔ Hardened steel rotating bezel that resists physical attacks - cam locks only
- ➔ Keys and cams sold separately
- ➔ CompX Chicago ACE cams are used on TuBAR cam locks
- ➔ Available with thread and rotary "T" type extensions

Things to know when ordering TuBAR products:

- ➔ Key number to be stamped on lock
- ➔ Mounting flat size: **2 flats .625; 1 flat .700**
- ➔ Keypull and rotation:
One way, 90°
- ➔ Direction of rotation:
Clockwise or Counterclockwise
- ➔ Insert cam part number if it is known. Or specify "A" and "B" dimensions. The cam locked position must also be specified.
- ➔ See CompX Chicago catalog page 6 for cam selection
- ➔ Adapter available (Fort part number CA-1) to use CompX Fort cams
- ➔ Number of keys required per lock



Optional

