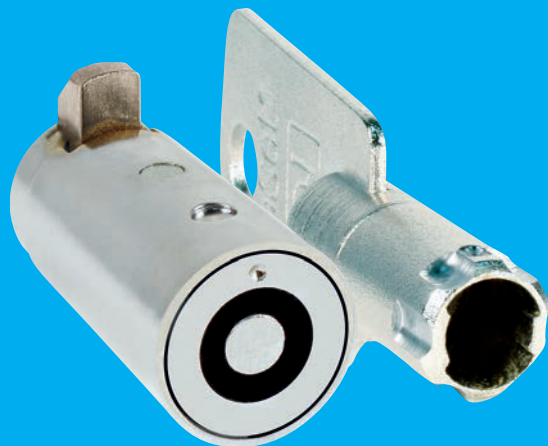




ROUTE MANAGEMENT



KeSet[®]



System **64**[®]
generation II

HIGH SECURITY



TuBAR[®]

A complete route management system: the CompX Route Management System featuring KeSet & System 64 – change codes up to 64 times with the same lock!

Every day, route managers and owners/operators face the kind of difficult problems that challenge their patience and take time and money to resolve.

PROBLEM	STANDARD SOLUTION	BEST SOLUTION
Keys are lost by disinterested employees; stolen by dishonest ones	New locks and keys must be ordered.	The CompX Route Management System, locks can be set to a new code quickly; no need to order new locks/keys.
Machines are moved from one route to another	Locks must be replaced; keys exchanged.	Set up routes with a specific combination code
Supervisors need to access machines on several routes	Must carry an unmanageable number of keys	The CompX Route Management System allows supervisors to carry only the keys needed
The service shop has to maintain and repair machines brought in from different routes	Must carry an unmanageable number of keys	The service shop has access to all machines with the CompX Route Management System

Selecting the right system

KeSet – with tens of thousands on installations worldwide and thirty years of proven reliability – is the most trusted name in route management systems and the easiest system to reset and use.

How KeSet works:

Manager inserts Gold Set key (code #01) for existing combination and turns to unlocked or neutral position and removes.

New combination Gold Set key (code #32) is inserted.

Manager turns the Gold Set key (code #32) to locked position and removes. This allows Silver Service key (code #32) to operate lock. Gold Set key (code #01) is retained by manager for future changes.

Add codes as you need them - no need to purchase keys for all 64 codes at one time.

KeSet Security

For your protection, all keys are assigned on an exclusive basis and are factory registered by means of confidential signature cards. All keys

are shipped separately from the locks. We do not supply or sell key blanks for duplication.

- ◆ Tumblers and driving pins are arranged in a manner to defeat picking & manipulation.
- ◆ Steel cylinders and hardened plugs resist punching, drilling & vandalism.
- ◆ Cam locks use hardened steel collars for further protection.

How System 64 works:

Each System 64 generation II lock uses a Group Key (Red Handle) to select from 8 programming Groups. A Reset Key (Black Handle) is used to select one of the 8 combinations available within each Group. The Group Key and the Reset Key manage the entire system...programming the tumbler arrangements to provide 64 combinations activated by matching the Operating Keys (Grey Handle).

You can choose any one of 64 Operating Keys, by using your Group Key to set the Group and your Reset Key to set the Combination, and the lock is programmed. The whole process can be done in seconds!

Add codes as you need them - no need to purchase keys for all 64 codes at one time.

System 64 Security

For your protection, all keys are assigned on an exclusive basis and are factory registered by means of confidential signature cards. All keys are shipped separately from the locks. We do not supply or sell key blanks for duplication.

- ◆ Solid steel construction with brass components.
- ◆ Unique key design and manufactured with cold drawn steel, significantly increases wear resistance.
- ◆ Tumblers and driving pins are arranged in a manner to defeat picking & manipulation.
- ◆ Steel outer barrel, stainless steel plug and brass components provide superb corrosion resistance for most applications.

KeSet & System 64 conform to NAMA specifications and are available in spring and dead bolt versions.



Every TuBAR tough patented lock offers:

- ◆ Maximum protection against forced entry. Virtually impregnable to pulling, punching, drilling and other common physical attacks.
- ◆ Registered key series for each customer.
- ◆ Unique key with no key blanks or key machines commercially available.
- ◆ Key blanks and key machines are not commercially available.
- ◆ Steel construction.
- ◆ Cylinder lock meets NAMA Standards.

Additional IC 12L inner cylinder features:

- ◆ Hardened steel barrel and composite keyway assures maximum protection from vandal attacks.
- ◆ User friendly key design will accommodate all TuBAR cylinders in the field.
- ◆ Keys sold separately. Factory re-keyable.
- ◆ Patented dual side bar mechanism provides the ultimate in resistance to surreptitious entry.
- ◆ Patented keyway for maximum key control.

