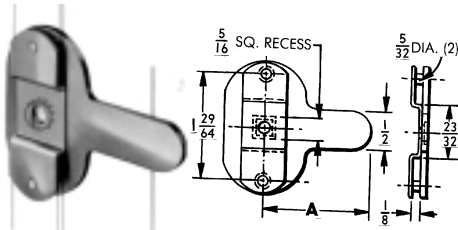




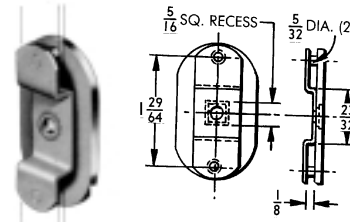
Latch Plates for Knob Locks, Handle Locks and Latches

STEEL CONSTRUCTION

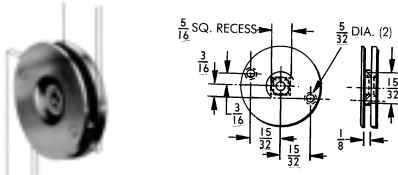
GROUP "A" LATCH PLATES



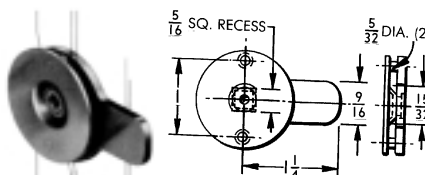
1 OR 3 POINT LATCHING



M3-6927-001 LATCH PLATE, 2 POINT LATCHING



M3-6926-001 LATCH PLATE, 1 OR 3 POINT LATCHING



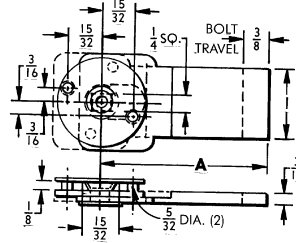
SLIDING BOLT, 1 OR 3 POINT LATCHING

PART NUMBER	ROTATION TO UNLATCH	"A" DIMENSION
M3-6921-001		1-29/64"
M3-6915-007		1-1/2"
M3-6915-001		1-9/16"
M3-6915-002		1-3/4"
M3-6915-004		1-7/8"
M3-6915-006		2-21/64"
M3-6915-005		2-1/2"
M3-6922-001	c/clockwise	2-3/8"
M3-6923-001	clockwise	2-3/8"
M3-6924-001	c/clockwise	1-29/64"
M3-6925-001	clockwise	1-29/64"
M3-6920-056		1-7/16"
M3-6920-053		1-5/8"
M3-6920-051		1-7/8"
M3-6920-050		2-1/8"
M3-6920-054		2-3/8"
M3-6920-055		2-1/2"

GROUP "B" LATCH PLATES



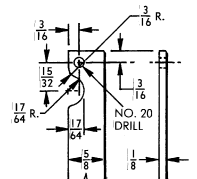
ILLUSTRATED FOR CLOCKWISE ROTATION OF LOCK OR LATCH TO UNLATCH



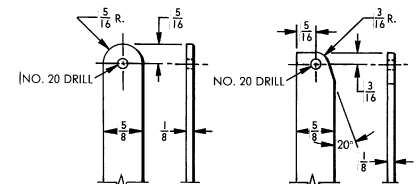
SLIDING BOLT, 1 OR 3 POINT LATCHING

LOCKING BARS

Not available from National Cabinet Lock. Shown below are recommended dimensions. Bar mat'l, 5/8" x 1/8" steel strip.



For M3-6922, M3-6923, M3-6924, M3-6925, M3-6928 and M3-6929.

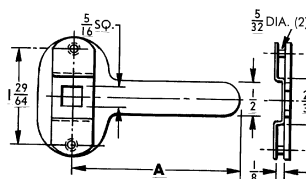


For M3-6915 Series, M3-6920 Series, M3-6921 and M3-

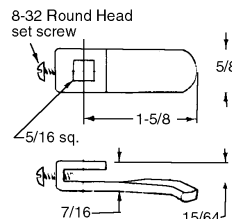
For M3-6926



M3-6920-001 SERIES LATCH PLATES



H2-0082-003 LATCH TONGUE, 1 POINT LATCHING



FASTENERS

E3-6050-806 8-32 x 3/8" R.H. Sems for all latch plates except M3-6920 Series and H2-0082-003.

D9-1522-409 3/8-16 Hex Nut for attaching M3-6920 Series latch plates to threaded spindle, 2 required.

M3-6831-101 Lockwasher for use with above hex nuts, 2 required. *Self Screw furnished with H2-0082-003 Tongue.

WHEN ORDERING SPECIFY:

- Part Number. • Finish. • "A" dimension where required • Mounting fasteners

Note: All Latch Plates are made of steel and finished Zinc Plated.