



# eLock

revolutionizing *electronic access control*

CompX eLock® is available in five models

# CompX eLock



*Numeric Keypad*



*Magstripe Card*



*Magstripe / Keypad  
Dual System*



*Prox Reader*



*Prox Reader /  
Keypad Dual System*



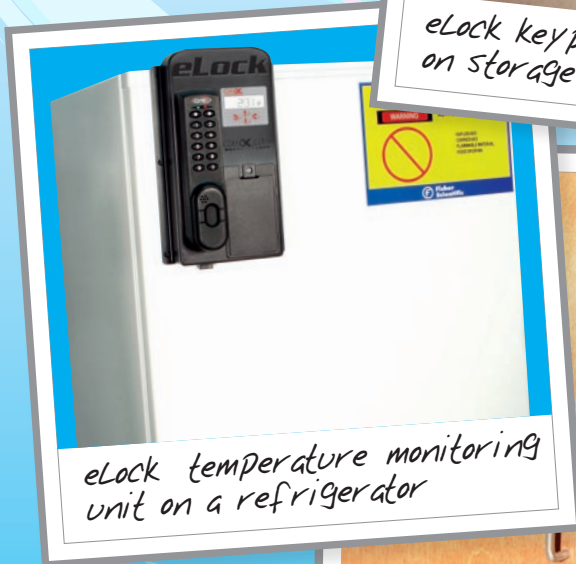




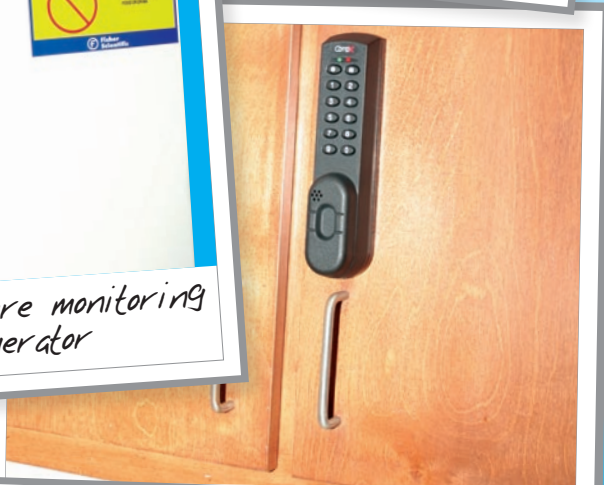
*eLock horizontal mount unit on a freezer*



*eLock keypad unit mounted on storage cabinets*



*eLock temperature monitoring unit on a refrigerator*



*prox card-keypad on a cabinet*



*eLock prox card-keypad unit mounted on a storage door*



*eLock refrigerator kit on an incubator*

## features

- ➔ 250 user/supervisor codes
- ➔ Use existing identification cards: magstripe Track 2 and HID® cards
- ➔ Audit trail of last 1500 access attempts with date, time and user name
- ➔ Non-volatile memory
- ➔ Motor driven latching mechanism
- ➔ Cabinet version operates on four AA batteries; refrigerator kit and temperature monitoring versions operate on six AA batteries; Alkaline batteries are recommended - not included
- ➔ Low battery indicator
- ➔ "Jump Start" 9-volt battery power port allows the user, with a valid credential, to access the CompX eLock® when the batteries are exhausted
- ➔ Compatible with 12-volt electric door strikes
- ➔ Standard RJ11 port for audit trail download
- ➔ Embedded Security Data:
  - ◆ Serial number
  - ◆ Two reset codes to delete supervisors and users
  - ◆ Pass code prevents unauthorized LockView® use

## options

- ➔ LockView® software
- ➔ Dual credential
- ➔ Power pack (120V or 230V)
- ➔ Dual latch control system
- ➔ Through door mounting available through OEM
- ➔ Electric Strike



Patent Pending.

# 1st and only product to provide Security & Temperature Monitoring

The CompX eLock® with temperature monitoring is the only product that offers security and the ability to record temperature, complying with all **Joint Commission** requirements.

- ➔ Allows secure access using existing credentials and badges
- ➔ Use on refrigerators, freezers, incubators and more to replace chart recorders
- ➔ Easy to install, battery operated
- ➔ Programming can be done manually or through optional LockView® Software
- ➔ Monitors internal temperatures from -40° F to 122° F (-40° C to 50° C)
- ➔ Provides programmable audit trails - charts, graphs, reports, etc.
- ➔ Enabling/disabling audible alarm
- ➔ Contains dry contact for remote monitoring systems

**To request a product demonstration or for more information, call 847-752-2500 or visit compx.com**



## from CompX eLock: Horizontal mount refrigerator kits!

Use the horizontal mount eLock for tall refrigerators or freezers, or where installation of vertical mount is not ideal.

*Horizontal mount eLock kits are not yet available in temperature monitoring.*





# CompX eLock® is available in six versions

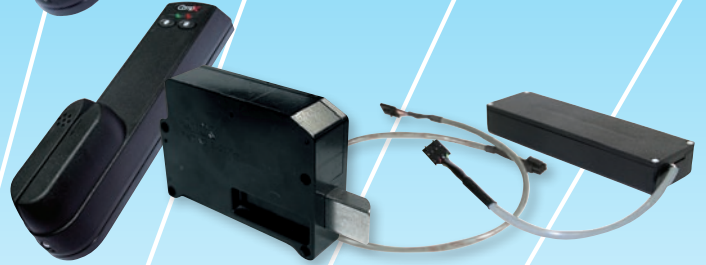
## eLock only

- ➔ CompX eLock® unit only; choice of keypad, proximity card reader, prox/keypad dual credential, magstripe card reader, magstripe/keypad dual credential. For use on interior entry doors when used in conjunction with electric strike (not included). Supplied with a two-wire cable; excludes the motorized latch.



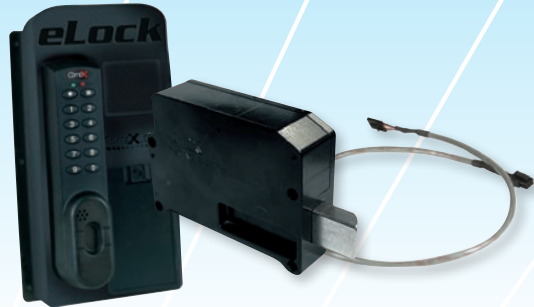
## cabinet eLock kit

- ➔ CompX eLock® cabinet kit; choice of keypad, proximity card reader, prox/keypad dual credential, magstripe card reader, magstripe/keypad dual credential. Includes eLock unit, motorized latch, battery compartment, cables and detailed installation instructions (4 AA batteries not included).



## refrigerator kit

- ➔ CompX eLock® refrigerator kit; choice of keypad, proximity card reader, prox/keypad dual credential, magstripe card reader, magstripe/keypad dual credential. Each kit contains eLock unit/housing, integrated motorized latch, strike plate and cover, integrated battery compartment and detailed installation instructions (6 AA batteries not included).



## horizontal mount refrigerator kit

- ➔ CompX eLock® horizontal mount; choice of left or right hand mount in membrane keypad, membrane keypad/magstripe, membrane keypad/prox. Each kit contains eLock unit/housing, integrated motorized latch, strike plate and cover, integrated battery compartment and detailed installation instructions (6 AA batteries not included).



## temperature monitoring refrigerator kit

- ➔ CompX eLock® temperature monitoring kit; choice of keypad, prox/keypad dual credential, magstripe/keypad dual credential. Each kit contains eLock unit/housing, integrated motorized latch, strike plate and cover, integrated battery compartment, LCD display, sealed temperature sensor with 10 ft. cord and detailed installation instructions (6 AA batteries not included).



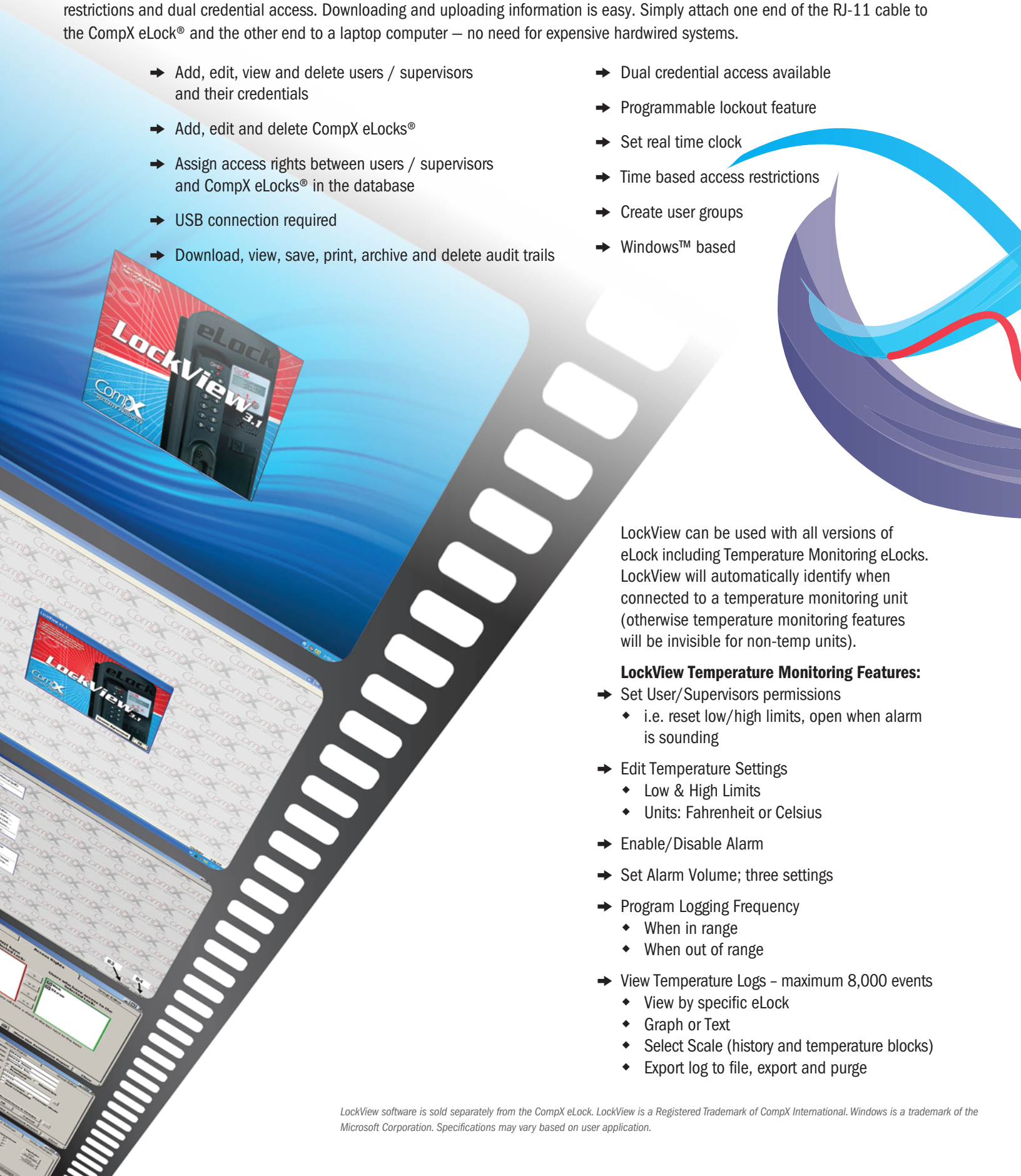
## temperature monitoring only

- ➔ CompX eLock® temperature monitoring unit only. Keypad eLock unit is mounted to the housing. Includes eLock temperature monitoring refrigerator keypad unit, LCD display, sealed temperature sensor with 10 ft. cord and detailed installation instructions (6 AA batteries not included).



LockView® makes it easy to monitor audit trails for the last 1500 access attempts, manage users and eLocks, and assign time-based restrictions and dual credential access. Downloading and uploading information is easy. Simply attach one end of the RJ-11 cable to the CompX eLock® and the other end to a laptop computer – no need for expensive hardwired systems.

- ➔ Add, edit, view and delete users / supervisors and their credentials
- ➔ Add, edit and delete CompX eLocks®
- ➔ Assign access rights between users / supervisors and CompX eLocks® in the database
- ➔ USB connection required
- ➔ Download, view, save, print, archive and delete audit trails
- ➔ Dual credential access available
- ➔ Programmable lockout feature
- ➔ Set real time clock
- ➔ Time based access restrictions
- ➔ Create user groups
- ➔ Windows™ based



LockView can be used with all versions of eLock including Temperature Monitoring eLocks. LockView will automatically identify when connected to a temperature monitoring unit (otherwise temperature monitoring features will be invisible for non-temp units).

**LockView Temperature Monitoring Features:**

- ➔ Set User/Supervisors permissions
  - ◆ i.e. reset low/high limits, open when alarm is sounding
- ➔ Edit Temperature Settings
  - ◆ Low & High Limits
  - ◆ Units: Fahrenheit or Celsius
- ➔ Enable/Disable Alarm
- ➔ Set Alarm Volume; three settings
- ➔ Program Logging Frequency
  - ◆ When in range
  - ◆ When out of range
- ➔ View Temperature Logs – maximum 8,000 events
  - ◆ View by specific eLock
  - ◆ Graph or Text
  - ◆ Select Scale (history and temperature blocks)
  - ◆ Export log to file, export and purge





### **AC 9V ADAPTER**

Part Numbers:  
**EL-2004-9VWB**  
*(for use with the CompX eLock® kit)*

**EL-2004-ACWB**  
*(for use with 12V electric strikes)*



### **HIGH BOND ADHESIVE KIT**

*(for use with glass doors)*

Part Number:  
**EL-VHB-KIT**



### **EXTRA LONG REFRIGERATOR STRIKE**

Part Number:  
**EL-XLSTRK-FRKIT**



### **MOTORIZED LATCH\***

Part Number:  
**EL-LATCH-3**



### **HID® PROX USER, SUPERVISOR CARD**

Part Numbers:  
**EL-2004-PC** *(no logo)*  
**EL-2004-PC-S** *(CSP logo)*



### **TORX HEAD DRIVER**

Part Number:  
**EL-DRV-15**



### **LOCKVIEW® SOFTWARE KIT**

*(provided with 7ft., 6-pin RJ11 cable,  
1-USB interrogator, 1 LockView CD)*

Part Number:  
**EL-LOCKVIEW-3**



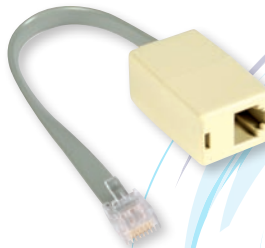
### **MAGSTRIPE USER, SUPERVISOR CARD**

Part Numbers:  
**EL-2004-MSC** *(no logo)*  
**EL-2004-MSC-S** *(CSP logo)*



### **HID® PROX TAG**

Part Number:  
**EL-2004-PT**



### **RJ 11 EXTENSION KIT, 4"**

Part Number:  
**EL-2004-RJ KIT**



### **LATCH CABLE\*, 24"**

Part Number:  
**EL-2004-LC**



### **ADJUSTABLE STRIKE KIT**

Part Number:  
**EL-AJSTRIKE-KIT**

# CompX eLock® part numbers

Crafting quality products in America since 1903

Part #	Description
EL-KP-CAB	Numeric keypad
EL-MS-CAB	Magstripe track 2 reader
EL-MSKP-CAB	Magstripe/keypad
EL-PR-CAB	Proximity reader - HID
EL-PRKP-CAB	Proximity/keypad
EL-KP-FRKIT	Refrigerator kit - numeric keypad
EL-MS-FRKIT	Refrigerator kit - magstripe reader
EL-MSKP-FRKIT	Refrigerator kit - magstripe/keypad
EL-PR-FRKIT	Refrigerator kit - proximity reader; HID
EL-PRKP-FRKIT	Refrigerator kit - proximity/keypad
EL-KP-TEMP	Temperature Monitoring Refrigerator kit - keypad
EL-MSKP-TEMP	Temperature Monitoring Refrigerator kit - magstripe/keypad
EL-PRKP-TEMP	Temperature Monitoring Refrigerator kit - proximity/keypad
EL-KP-HLFRKIT	Horizontal mount keypad, left hand mount* refrigerator kit with membrane keypad
EL-KP-HRFRKIT	Horizontal mount keypad, right hand mount* refrigerator kit with membrane keypad
EL-MSKP-HLFRKIT	Horizontal mount keypad/magstripe, left hand mount* refrigerator kit (membrane keypad & magstripe reader)
EL-MSKP-HRFRKIT	Horizontal mount keypad/magstripe, right hand mount* refrigerator kit (membrane keypad & magstripe reader)
EL-PRKP-HLFRKIT	Horizontal mount keypad/prox, left hand mount* refrigerator kit (membrane keypad & prox reader)
EL-PRKP-HRFRKIT	Horizontal mount keypad/prox, right hand mount* refrigerator kit (membrane keypad & prox reader)
EL-KP-TEMP-U	Temperature monitoring unit only; keypad
EL-2004-9VWB	CompX 9-volt adaptor
EL-2004-MSC	Magstripe card, track 2
EL-2004-PC	Proximity card, HID
EL-2004-PT	Proximity tag, HID
EL-DRV-15	Tox head driver
EL-LATCH-3	Gear driven spring latch
EL-LOCKVIEW-3	CompX LockView® software
EL-VHB-KIT	High bond adhesive kit - glass door applications
EL-XLSTRK-FRKIT	Extra long refrigerator strike
EL-2004-RJ KIT	RJ 11 extension kit, 4"
EL-2004-LC	Latch cable, 24"
EL-AJSTRIKE-KIT	Adjustable Strike Kit

\* Location of door hinges determines hand of door when facing door; i.e. if hinges are on the right, order right hand mount. eLock unit will be installed on opposite side of hinges.

**847.752.2500**

**compxelock.com**

**715 Center St.  
Grayslake, IL 60030**

Copyright 2009 © CompX Security Products.  
CompX eLock and Lockview are Registered Trademarks of CompX International.

Reorder #: F2644-010