

**NEW!**

# Introducing **150 SERIES** **CompX eLock** for **Refrigerators**

**Revolutionizing Electronic Access Control**



Vertical version shown. Horizontal left and right hand versions also available.

Network units also available.  
Visit [compxelock.com](http://compxelock.com) for all eLock solutions.

## **150 series eLock®**

Keyless, non-network, electronic access control solution for refrigerators, freezers and other appliances.

### **all versions feature:**

- ◆ Audit trail of last **1,500 access attempts** with date, time and user name
- ◆ 250 user/supervisor codes
- ◆ Three modes of access: **Keypad**, **Proximity card\***, **HID or iCLASS HID** \*Use existing identification cards
- ◆ Motor driven **latching mechanism**
- ◆ 6-AA battery pack; premium brand Alkaline batteries recommended (not included)
- ◆ Low battery indicator
- ◆ Jump start **battery override** available through mini USB communications port allows the user, with a valid credential, to access the CompX eLock® when the batteries are exhausted
- ◆ Mini USB communications port for audit trail download with **optional** LockView 5 software



Horizontal right hand version

**CompX**  
SECURITY PRODUCTS

Reorder #: F2644-036

Copyright 2017 © CompX Security Products / 847.752.2500 / [comp.x.com](http://comp.x.com) / 715 Center St., Grayslake, IL 60030  
Any companies and/or products referred to herein are marks or registered trademarks of their respective companies, owners and/or mark holders.

For more information, call **847.752.2500**

# LockView SOFTWARE

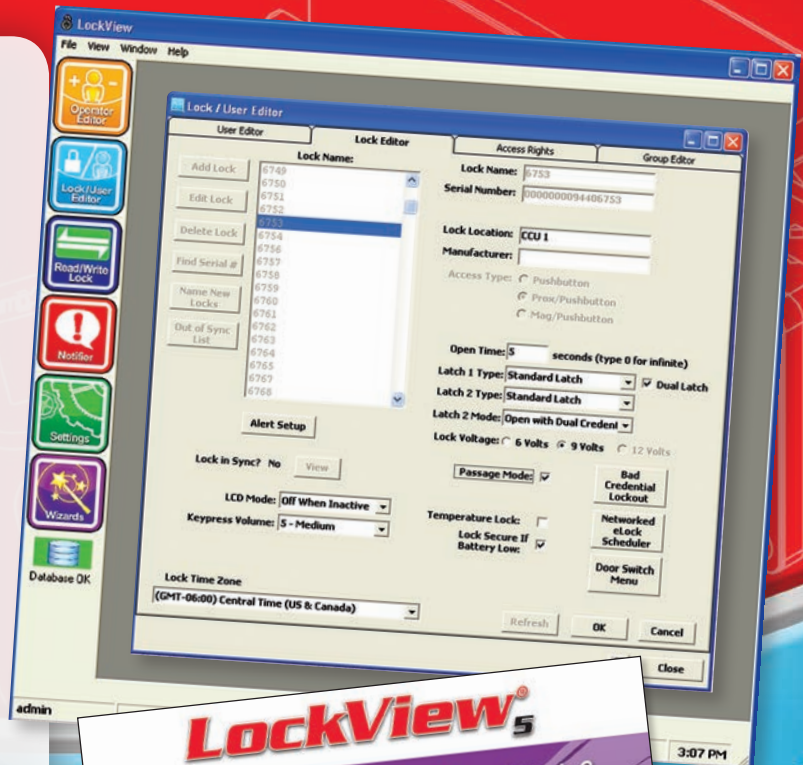
## LockView® 5 software

LockView® makes it easy to monitor audit trails for the last 1,500 access attempts, manage users and eLocks, and assign time-based restrictions and dual credential access. Downloading and uploading information is simple. Attach mini USB to communications port on eLock and standard USB to laptop.

- ◆ Provides a comprehensive audit trail of the last 1,500 access attempts; including date, time and user name
- ◆ Complies with Joint Commission standards and is 21 CFR Part 11 compliant
- ◆ When connected, LockView sends updates to the eLock. Updates can include:
  - User changes (Add / Delete / Modify Credentials)
  - eLock Changes (Add / Delete / Modify eLocks)
  - Access Rights changes
- ◆ LockView 5 works with all 150 and 200 series eLock models (software sold separately)

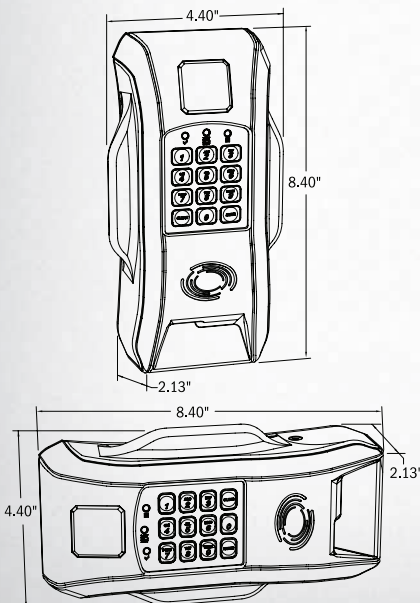
### Minimum System Requirements

2GB RAM, 2GB free space on hard drive, 64bit Compatible, OS: Windows XP, Vista, 7. Pentium III 1.0 GHz or higher. Other configurations are acceptable; please consult factory for detailed information.



### Controller

### Part numbers



150-KP-FRG-V	Keypad only, refrigerator vertical version
150-PRKP-FRG-V	Proximity reader (HID 125 kHz) with Keypad, vertical refrigerator version
150-ICKP-FRG-V	iCLASS Proximity reader (HID 13.56 MHz) with Keypad, vertical refrigerator version
150-KP-FRG-R*	Keypad only, refrigerator right hand version
150-PRKP-FRG-R*	Proximity reader (HID 125 kHz) with Keypad, right hand refrigerator version
150-ICKP-FRG-R*	iCLASS Proximity reader (HID 13.56 MHz) with Keypad, right hand refrigerator version
150-KP-FRG-L*	Keypad only, refrigerator left hand version
150-PRKP-FRG-L*	Proximity reader (HID 125 kHz) with Keypad, left hand refrigerator version
150-ICKP-FRG-L*	iCLASS Proximity reader (HID 13.56 MHz) with Keypad, left hand refrigerator version

\* Location of door hinges determines hand of door when facing door; i.e. if hinges are on the right, order right hand mount. eLock unit will be installed on opposite side of hinges.

NOTE: on vertical units (shown, to the left), the strike plate is mounted on the top of the refrigerator. On handed (horizontal) units, the strike plate is mounted on the side.

**CompX**  
SECURITY PRODUCTS



For more information, call **847.752.2500**

Reorder #: F2644-036

Copyright 2017 © CompX Security Products / 847.752.2500 / compx.com / 715 Center St., Grayslake, IL 60030  
Any companies and/or products referred to herein are marks or registered trademarks of their respective companies, owners and/or mark holders.