

# NEW!

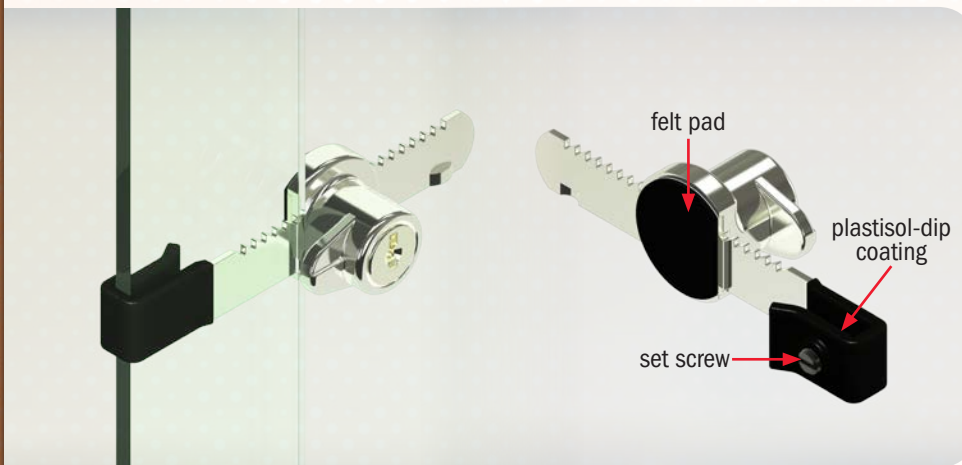
# AVAILABLE NOW!

## SLIDING GLASS DOOR LOCKS

from **CompX National**  
& **CompX Timberline**

# STOCK® LOCKS

Key together all disc tumbler locks  
(both cabinet and sliding glass door)  
using the same key blank\*



- ◆ Plastisol dip coating will reduce glass rattling and provide a snug fit (for glass ¼" and thinner)
- ◆ Set screw will keep the lock from "drooping" down when in the locked position
- ◆ Felt pad will eliminate rattling between the glass door and the lock body

**CompX**  
NATIONAL

- ◆ **C8040-14A** features the **National** disc tumbler keyway, using key blanks D8785 (non-master keyed) and D8783 (master keyed)
- ◆ KA codes: C346A, C390A, C413A, C415A, C420A, C642A
- ◆ 200 KD codes, 200 MKKD codes
- ◆ 14A finish (bright nickel)

**CompX**  
TIMBERLINE

- ◆ **C380SG** features the **Timberline** TA series codes using the D101KY master key and D300KY user key blank (master keying is standard)
- ◆ Lock plug NOT removable
- ◆ KA codes: 100TA, 101TA, 102TA, 103TA
- ◆ 50 KD
- ◆ 14A finish (bright nickel)

\* Note: National key blanks will work with National products only.  
Timberline key blanks will work with Timberline products only.

**CompX**  
SECURITY PRODUCTS



For more information, call **864.297.6655**

Copyright 2015 © CompX Security Products / 864.297.6655 / compx.com / PO Box 200, Mauldin, SC 29662  
Any companies and/or products referred to herein are marks or registered trademarks of their respective companies, owners and/or mark holders.