

Introducing **CompXpress**

Special Keyed Pin Tumbler Locks shipped **NEXT BUSINESS DAY**

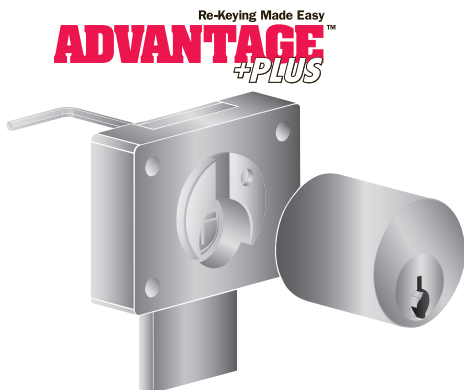
Master Keyed, Keyed Alike in groups

| Part Number | Description/Type of Mounting | Cylinder length |
|-------------|--|-----------------|
| C8163-26D+ | Pin tumbler, Drawer, dead bolt | 15/16" |
| C8173-26D+ | Pin tumbler, LH or RH door, dead bolt | 7/8" |
| C8174-26D+ | Pin tumbler, LH or RH door, dead bolt | 1-1/8" |
| C8175-26D+ | Pin tumbler, LH or RH door, dead bolt | 1-3/8" |
| C8177-26D+ | Pin tumbler, Drawer, dead bolt | 1-1/8" |
| C8178-26D+ | Pin tumbler, Drawer, dead bolt | 7/8" |
| C8179-26D+ | Pin tumbler, Drawer, dead bolt | 1-3/8" |
| C8101-26D | Pin tumbler, Lipped/overlay, cam | 15/16" |
| C8102-26D | Pin tumbler, Flush, cam | 1-1/16" |
| C8103-26D | Pin tumbler, Lipped/overlay, cam | 1-3/16" |
| C8106-26D | Pin tumbler, Flush, cam | 1-7/16" |
| C8108-26D | Pin tumbler, Flush, cam | 1-3/4" |
| C8109-26D | Pin tumbler, Lipped/overlay, cam | 1-3/4" |
| C8140-26D | Pin tumbler, sliding glass doors | N / A |
| C8142-26D | Pin tumbler, sliding wood doors, plunger | 1-1/8" |

+ Part numbers with the plus+ sign indicate locks featuring the Advantage Plus system.

- ➔ All locks are WI & ANSI/BHMA approved.
- ➔ Refer to the **CompX National** catalog for packaging and the **Architectural Specification Guide** for more information.
- ➔ **26D – dull chrome** available in the CompXpress program. Other finishes ship in five business days.
- ➔ Two locations: Rancho Cucamonga, CA & Mauldin, SC.
- ➔ Contact your CompX sales representative for pricing information.

The **Advantage Plus+** feature allows users to remove the cylinder while the lock remains in place. NO mounting screws need to be removed. Simply use the 5/64" Allen wrench from the back to remove the cylinder for re-keying.



All product manufactured and assembled in the United States.
ISO 9001 certified.

864.297.6655

compX.com

PO Box 200
Mauldin, SC 29662

Copyright 2006
© CompX Security Products

CompX
NATIONAL